

CONTACTOR

MCX 22dc/ MCX 23dc



INSTRUCTION MANUAL

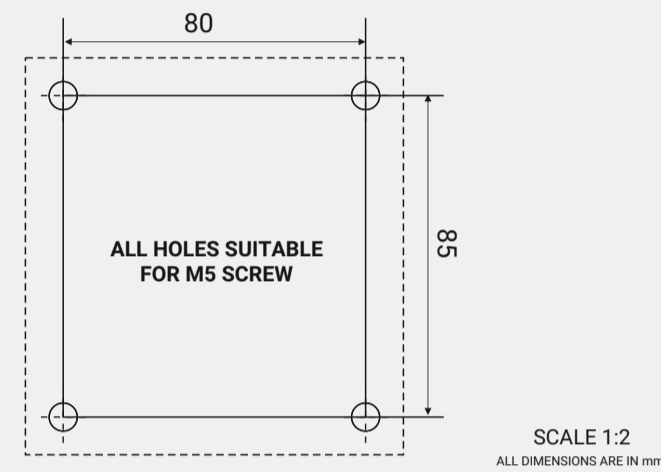


The manufacturer assumes no responsibility for injuries, losses, damages to human beings and/or equipments due to inappropriate application of instructions, provided herein.

Hazards of electric shock and burning. Installation, Commissioning and Maintenance by qualified personnel only. Always use an appropriate voltage detection device to confirm the absence of voltage. Disconnect power and isolate before proceeding with any work on this equipment. Use according to operating instructions, professional practices, wiring rules, codes, safety regulations applicable to the given installation.

Packaging material (carton & padding) can be recycled. Poly bags can be recycled separately.

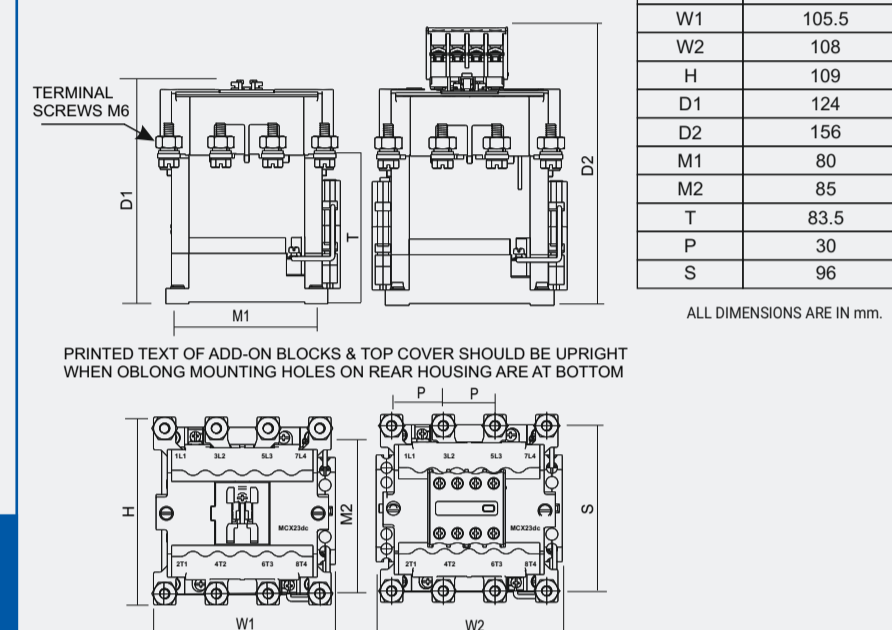
MOUNTING DIMENSIONS



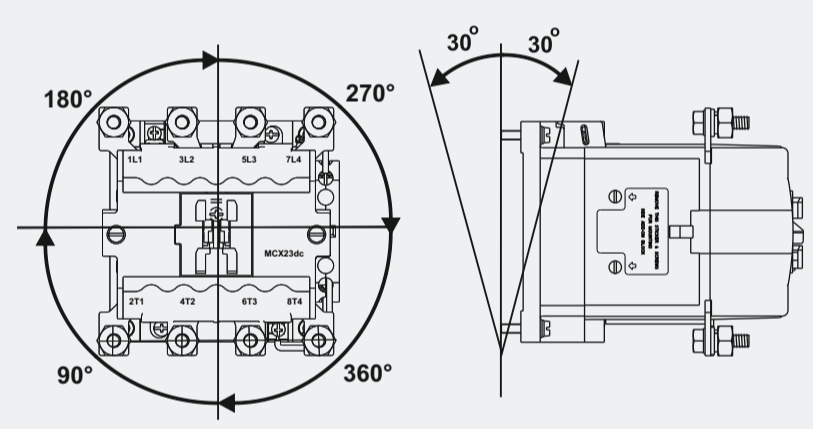
RECOMMENDED TIGHTENING TORQUE

Terminal Description	Screw Size	Recommended Torque (Nm)
Main Pole Terminals	M6	4.5
Aux Pole/ Coil/ Add on block Terminals	M3.5	1.1

OVERALL DIMENSIONS



MOUNTING



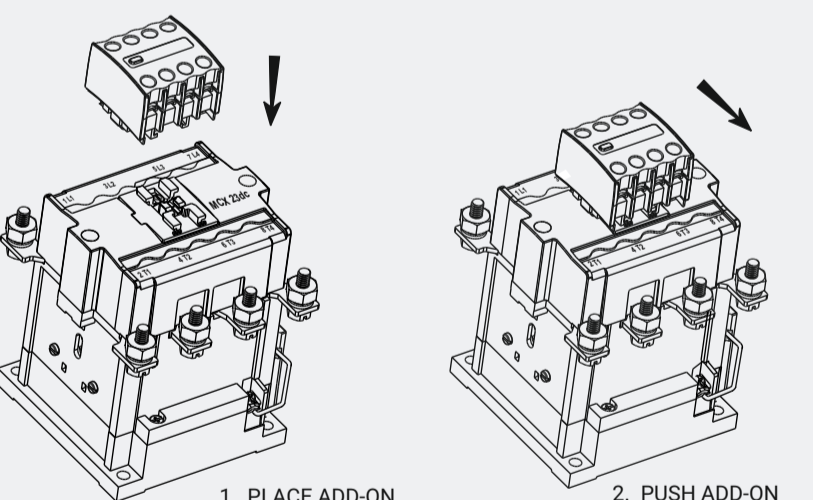
Conductor type	Termination capacity	
	MCX 22dc	MCX 23dc
Solid conductors (mm ²)	-	-
Multi strand conductors (mm ²)	-	-
Cable with Lug (mm ²)	1 x 35	1 x 50
Busbar	-	2 x (12.5 x 3)

ACCESSORIES AND SPARES

Accessories Description	Catalogue No.	Terminal Markings
Auxiliary Contact Block	CS941120000	53-54, 63-64, 73-74, 83-84
Top 2NO+1NC	CS941130000	53-54, 61-62, 73-74, 83-84
Top 2NO+2NC	CS941140000	53-54, 61-62, 71-72, 83-84
Top 1NO+2NC	CS941150000	53-54, 61-62, 71-72, 81-82
Top 4NC	CS941160000	51-52, 61-62, 71-72, 81-82
Top 2 NO	CS941170000	53-54, 63-64
Top 1NO+1NC	CS941180000	53-54, 61-62
Top 2 NC	CS941190000	51-52, 61-62
Top 1 NO	CS941200000	53-54
Top 1 NC	CS941210000	61-62
Side 1NO+1NC (L/RF)	CS942010000	13-14, 21-22
Side 1NO+1NC (DELAYED N/C)	CS909140000	43-44, 31-32
Mech. Interlock Kit-MCX M3	CS930950000	

Spares Description	Catalogue No.
Spare Coil- MCX 22/23dc	CS906445000
Spare Contacts Kit MCX 22dc	CS943310000
Spare Contacts Kit MCX 23dc	CS900780000

TOP ADD-ON FITMENT



1. PLACE ADD-ON AS SHOWN
2. PUSH ADD-ON TO ENGAGE COMPLETELY

REMOVAL: LIFT LOCK OF ADD-ON & FOLLOW THE SEQUENCE IN REVERSE ORDER

MIL KIT MOUNTING

MECHANICAL INTERLOCK KIT CONTAIN:

- MECHANICAL INTERLOCK ASSEMBLY - 1 No
- GUIDE ASSEMBLY - 4 Nos
- CONTACTOR MOUNTING SCREWS & WASHERS - 8 Nos
- SIDE ADD-ON BLOCK - 4 Nos

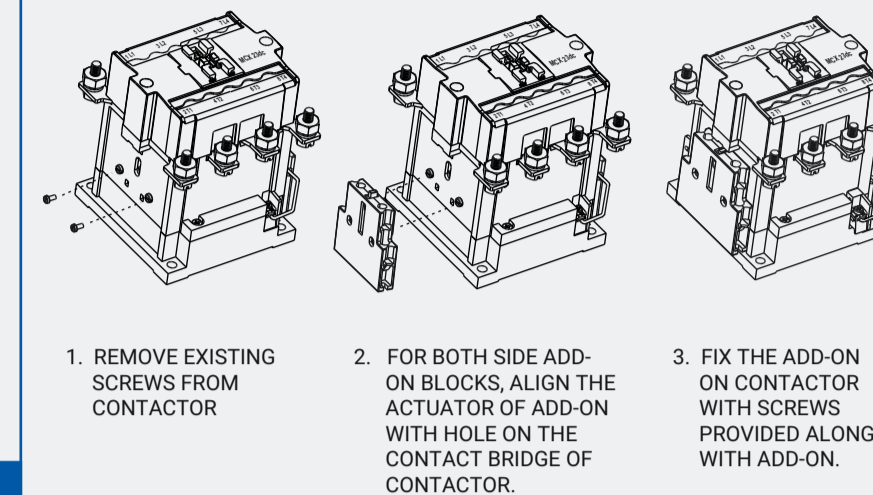
MECHANICAL INTERLOCK KIT MOUNTING PROCEDURE:

- SIDE ADD-ON BLOCK: MOUNT SIDE ADD-ON BLOCK ON BOTH SIDE OF CONTACTOR-1. REFER SKETCH AS PER PAGE ①
- NOTE: FOR MCX 21-23dc MOUNT ADD-ON BLOCK ONLY ON THE LEFT SIDE.
- GUIDE ASSEMBLY: INSERT PROJECTED PORTION OF GUIDE ASSEMBLY IN THE HOLE OF ADD-ON BLOCK, MOUNT GUIDE ASSEMBLY ON BOTH SIDE OF CONTACTOR-1. REFER SKETCH AS PER PAGE ②
- CONTACTOR MOUNTING: PLACE ABOVE CONTACTOR-1 ON ONE SIDE OF BASE PLATE ASSEMBLY. USE SCREWS AND WASHERS (PROVIDED WITH MIL KIT) TO FIX CONTACTOR ON BASE PLATE.
- REPEAT ABOVE STEP 1 AND 2 FOR CONTACTOR-2.
- PLACE AND FIX CONTACTOR-2 ON ANOTHER SIDE OF BASE PLATE. REFER SKETCH AS PER PAGE ③

MECHANICAL INTERLOCK KIT WITH CONTACTORS ARE NOW READY FOR INSTALLATION.

MIL KIT MOUNTING

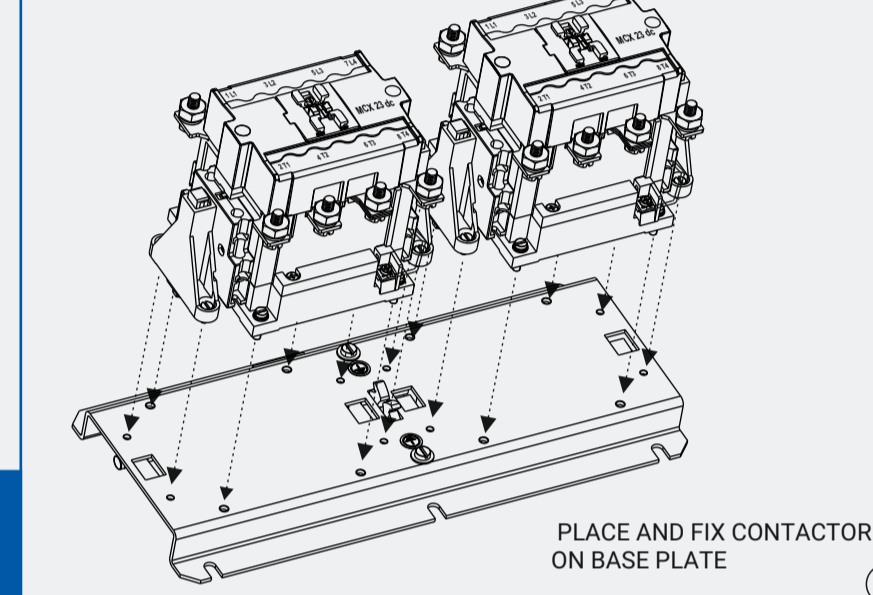
MOUNTING OF SIDE ADD-ON BLOCK:



NOTE: FOR MCX 22-23dc, MOUNT SIDE ADD-ON BLOCK ONLY ON THE LEFT SIDE.

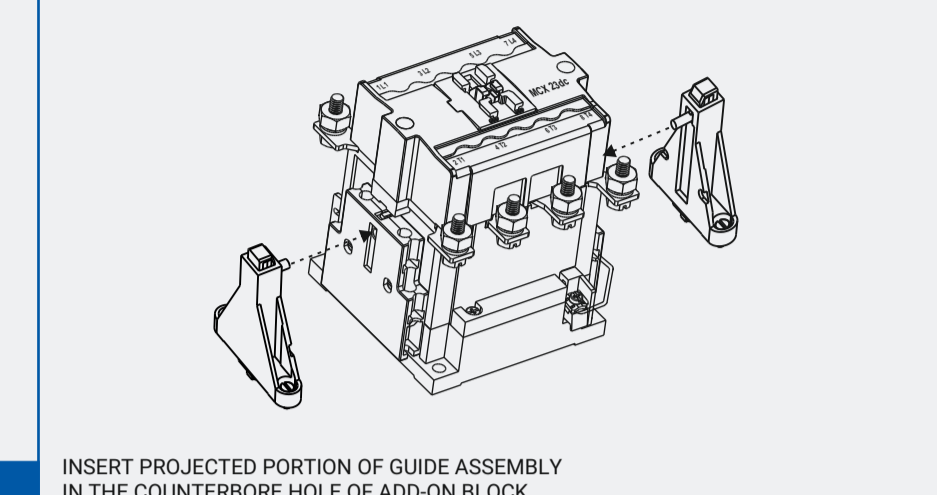
MIL KIT MOUNTING

CONTACTOR FIXING:

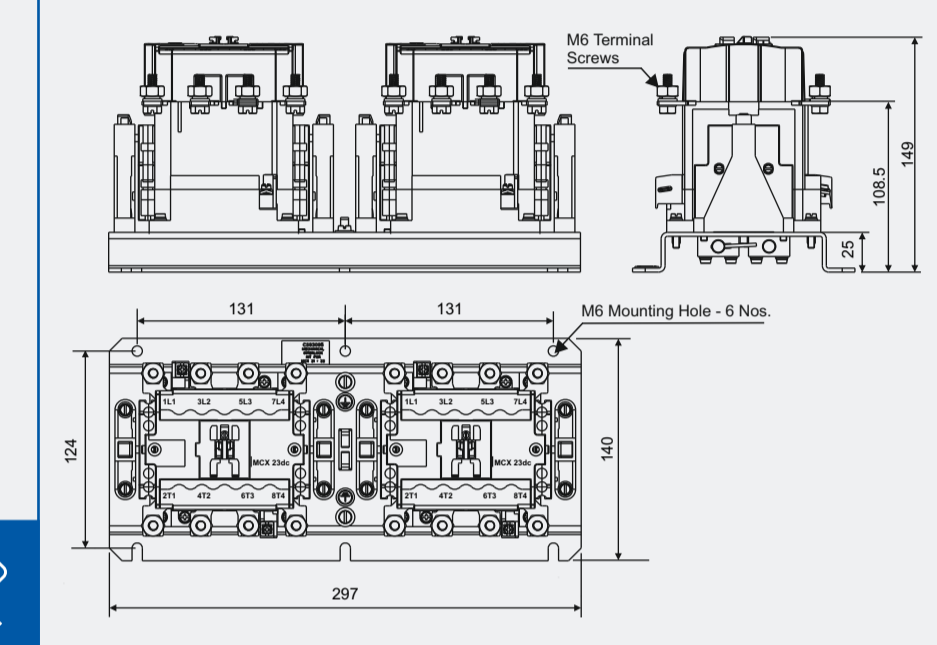


MIL KIT MOUNTING

MOUNTING OF GUIDE ASSEMBLY:

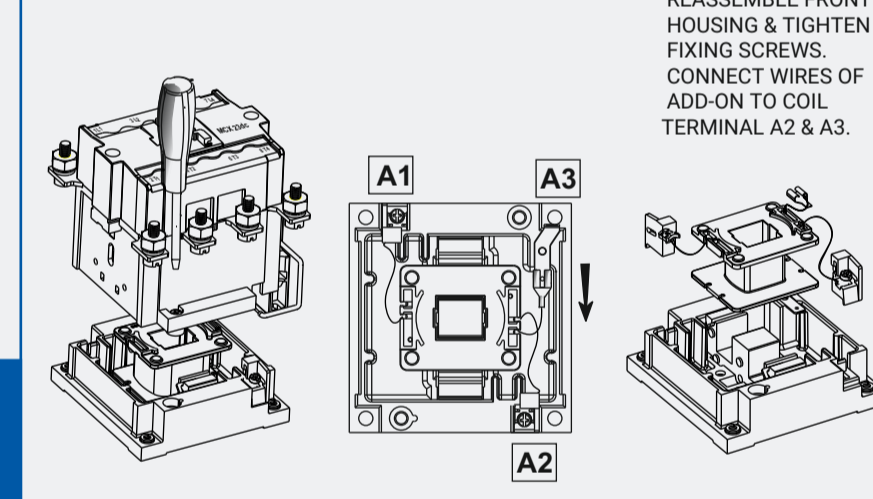


MIL KIT OVERALL DIMENSIONS



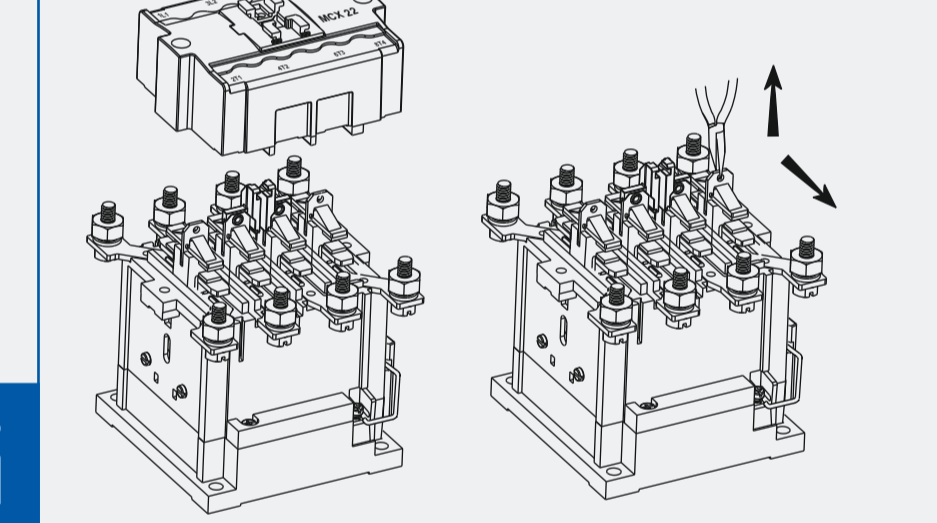
COIL REPLACEMENT

- REMOVE CONNECTING WIRES FROM COIL TERMINAL A2 & A3. THEN UNSCREW FRONT HOUSING FROM REAR HOUSING
- REMOVE SNAP-ON COIL TERMINAL WIRE FROM TERMINAL A3
- SLIDE OUT COIL TERMINALS A1 & A2. REMOVE COIL ASSEMBLY NEW COIL ALONG WITH COIL TERMINALS. REASSEMBLE FRONT HOUSING & TIGHTEN FIXING SCREWS. CONNECT WIRES OF ADD-ON TO COIL TERMINAL A2 & A3.



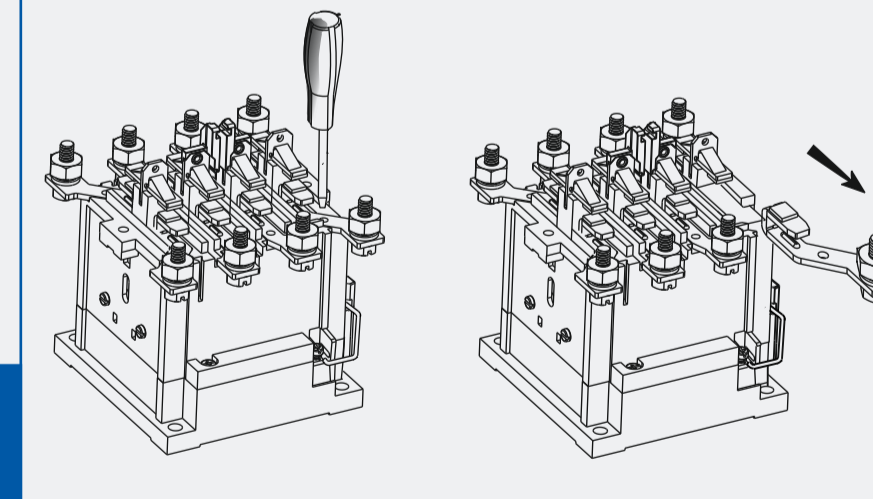
CONTACT INSPECTION AND REPLACEMENT

- REMOVE TOP ADD-ON THEN UNSCREW COVER FROM FRONT HOUSING
- TO REMOVE MOVING CONTACT & LEAF SPRING, RAISE HOLDER BY USING PLIER. TAKE OUT MOVING CONTACT & LEAF SPRING FOR REPLACEMENT.



CONTACT INSPECTION AND REPLACEMENT

- TO REPLACE FIXED CONTACT, UNSCREW FIXING SCREW
- REPLACE FIXED CONTACT & TIGHTEN THE SCREW. ENSURE PRESENCE OF SPRING & PLAIN WASHER WHILE ASSEMBLING NEW FIXED CONTACTS.



"This literature gives information to user about product installation, operation maintenance and disposal. This information is not exhaustive and should customer require further information, in specific cases, customer may contact customer interaction cell."
"The manufacturer assumes no responsibility for injuries, losses, damages to human beings and/or equipments due to inappropriate application of instructions, provided herein."
"Product development is a continuous process. The information given in this literature is Subject to change. For latest information the customer may contact customer interaction cell."
"Product images are indicative"

CUSTOMER INTERACTION CELL (CIC)
Phone No: 022 6932 7800
E-mail: CIC@LK-EA.COM
Website: WWW.LK-EA.COM

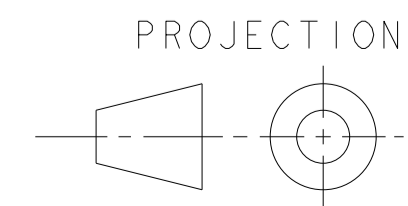
Lauritz Knudsen
Electrical & Automation
Electrical Standard Products
A/600, SHIL - MAHAPE ROAD,
TTC Industrial Area, MIDC Thane,
MUMBAI, MAHARASHTRA, 400710

THIS DRAWING AND DESIGN MUST NOT BE COPIED WITHOUT PERMISSION IN WRITING.

MATERIAL: 80 gsm MAPLITHO PAPER
NOTE : UNLESS OTHERWISE SPECIFIED LAYOUT, COLOUR SCHEME, FONT STYLES AND FOLDING SEQUENCE CONFORM TO CD01020

This component does not use any material listed hazardous by RoHS directives

DATE :	
SCALE: 1:1	
OFN/RLM No.:	
SOFTWARE: Coreldraw	
MODEL :	
PROCESS SHEET:	DEPT: 300202316
DRAWN BY:	
CHECKED BY:	
APPROVED BY:	



L&T Electrical & Automation
(A Unit of Schneider Electric India Private Limited)

Product Insert
CONTACTOR (MCX 22dc/ MCX 23dc)

SP02490

SHEET 1 OF 1

REVISIONS

TCN 500001470535
13-05-2024 SS