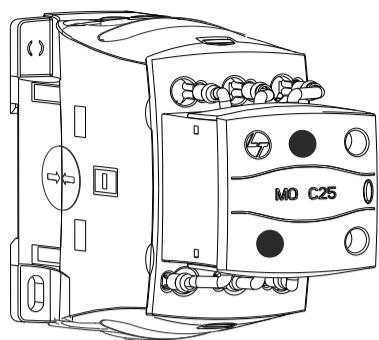


MO C RANGE OF CAPACITOR DUTY CONTACTORS



The manufacturer assumes no responsibility for injuries, losses, damages to human beings and/or equipments due to inappropriate application of instructions, provided herein.



Disconnect the power and isolate the product before proceeding with any work on this equipment.
Always use an appropriate voltage detection device to confirm the absence of voltage.
Installation to be done by qualified personal only.
Hazards of electric shock and fire.



Packaging material (carton & padding) can be recycled.
Poly bags can be recycled separately.

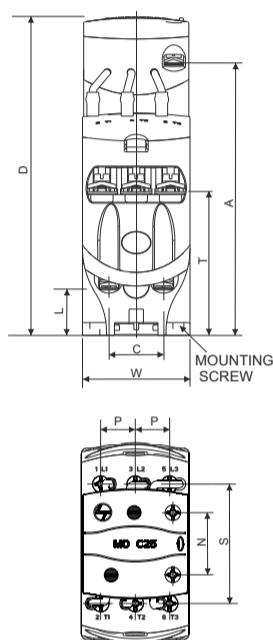
IMPORTANT INSTALLATION INSTRUCTIONS

- Set undervoltage limit in APFC controller as described below to ensure control supply is cut-off in low voltage conditions.
 - Ratings MO C3 to MO C30 70% of rated coil voltage
 - Ratings MO C40 to MO C100 75% of rated coil voltage
- In case APFC controller does not have provision for under voltage protection, separate undervoltage protection relay shall be used, with undervoltage settings as described above
- Ensure operating frequency does not exceed the limits as described below
 - Ratings MO C3 to MO C85 240 Operating Cycles/hour
 - Rating MO C100 120 Operating Cycles/hour
- Ensure tightening torque for cable terminations as specified in product information printed on product



OVERALL DIMENSIONS

ALL DIMENSIONS ARE IN mm.

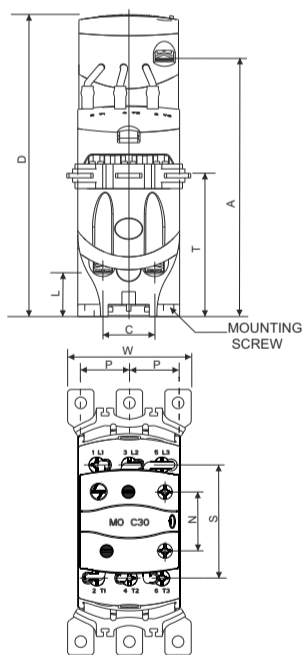


LABEL	MO C3 - MO C25	MO C40 - MO C50	MO C75 - MO C85
W	45	55	70
D	133.5	163	175
H	87	123.5	135
N	26	26	26
T	60	68	71
C	22.8	27	35
L	19.6	29.5	30
S	50	82	93
P	14.4	18	23.3
A	113	142	154



OVERALL DIMENSIONS

ALL DIMENSIONS ARE IN mm.

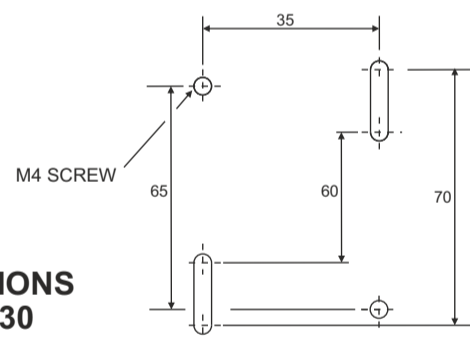


LABEL	MO C30	MO C60	MO C100
W	56	73	91
D	133.5	163	175
H	115	174	194
N	26	26	26
T	62	71	74.3
C	22.8	27	35
L	19.6	29.5	30
S	50	82	93
P	21.8	28	35
A	113	142	154



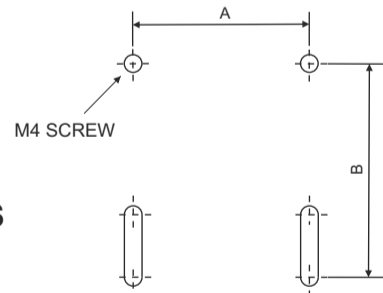
DRILLING PLAN

ALL DIMENSIONS ARE IN mm.



MOUNTING DIMENSIONS FOR MO C3 to MO C30

RATINGS	DIM. A	DIM. B
MO C40 to MO C60	45	100-105
MO C75 to MO C100	60	115-120

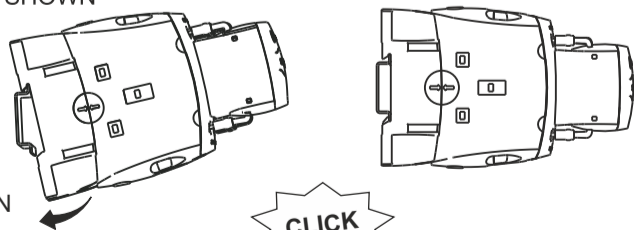


MOUNTING DIMENSIONS FOR MO C40 to MO C60 FOR MO C75 to MO C100



DIN RAIL FITMENT

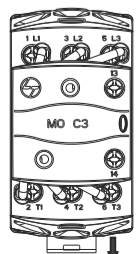
- ENGAGE CONTACTOR WITH DIN RAIL AS SHOWN



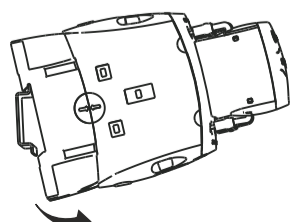
- PUSH DOWN

CLICK

DIN RAIL REMOVAL



- PULL OUT DIN RAIL CLAMP



- PULL OUT UNIT



CABLE TERMINATION

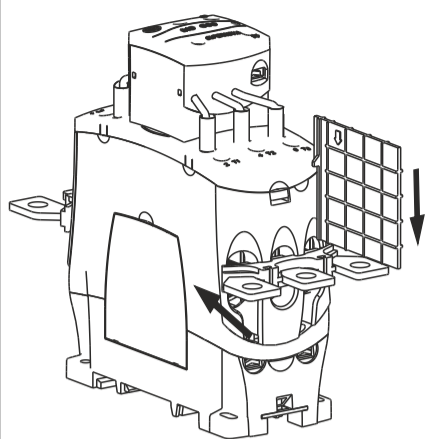
Conductor Type - Unprepared / Lugless Copper conductors		MO C3 to MO C25	MO C40 to MO C50	MO C75 to MO C85
Solid Conductors	Main Poles	2 x 2.5 - 10 mm ²	-	-
	Auxiliary Poles	2 X 1 - 2.5 mm ²	2 X 1 - 2.5 mm ²	2 X 1 - 2.5 mm ²
Stranded Conductors	Main Poles	2 x 2.5 - 6 mm ²	2 x 10 - 35 mm ²	2 x 16 - 70 mm ²
	Auxiliary Poles	2 X 1 - 2.5 mm ²	2 X 1 - 2.5 mm ²	2 X 1 - 2.5 mm ²
Insulated Pin Lug / Ferrule*	Main Poles	1 x 4 - 10 mm ²	1 x 25 - 35 mm ² 2 X 16 - 25 mm ²	1 x 50 - 70 mm ² 2 X 25 - 35 mm ²
	Main Poles	1 x 4 - 10 mm ² D= 12.4 mm Max.	-	-
Tightening Torque		2.5 Nm	4 Nm	5 Nm
Allen key size (Across flat)		-	4 mm	5 mm

*Terminate Insulated Pin Lug/Ferrule at the Top slot of the Box Clamp for MO C40, 50, 75 & 85

Conductor Type		MO C30	MO C60	MO C100
Main Pole - Copper Lug with Copper conductors Auxiliary Pole - Copper Stranded Conductors	Lug Size	2 x 16 mm ²	2 x 50 mm ²	2 x 95 mm ²
	Lug Palm Width	W=12 mm. Max.	W=18 mm. Max.	W=25 mm. Max.
	Lug Hole Size	D = 6.5 mm.	D = 8.4 mm.	D = 10.5 mm.
	Tightening Torque	3.5 Nm	5 Nm	6 Nm
Auxiliary Poles		2 x 1 - 2.5 mm ²	2 x 1 - 2.5 mm ²	2 X 1 - 2.5 mm ²



MOLDED SPREADER LINK FITMENT MO C30, MO C60 & MO C100



- 1) UNSCREW THE TERMINATION SCREWS
- 2) INSERT MOLDED SPREADER LINK IN
-THE TERMINAL SLOT FOR MO C30
-THE TOP SLOTS OF BOX CLAMP
FOR MO C60 AND MO C100
AS SHOWN IN THE FIGURE
- 3) PUSH IN MOLDED SPREADER LINK AS
SHOWN BY THE DIRECTION OF ARROW
TILL IT STOPS
- 4) TIGHTEN THE TERMINAL SCREW
WITH TORQUE AS SPECIFIED
IN INFORMATION PRINTED ON
PRODUCT HOUSING
- 5) INSERT PHASE BARRIERS IN "T" SLOTS
PROVIDED IN THE MOLDED SPREADER
LINKS AS SHOWN



PRODUCT
OPERATION

9

SIDE ADD-ON FITMENT FOR MO C3 TO MO C30

1. REMOVE CUTOUTS

PUSH
PRESS KNOBS
2. PLACE SIDE ADD-ON IN CONTACTOR SLOTS AS SHOWN
3. PRESS THE KNOBS AND PUSH THE SIDE ADD-ON AS SHOWN TO ENGAGE



PRODUCT
OPERATION

10

SIDE ADD-ON FITMENT FOR MO C40 TO MO C100

1. REMOVE COVER
2. PLACE SIDE ADD-ON IN CONTACTOR SLOTS AS SHOWN

PUSH
PRESS KNOBS
3. PRESS THE KNOBS AND PUSH THE SIDE ADD-ON AS SHOWN TO ENGAGE



PRODUCT
OPERATION

11

COIL REPLACEMENT FOR MO C3 TO MO C30

1. FOR MO C30 REMOVE SPREADER LINKS
2. SLIT THE STICKERS PUT ON EITHER SIDE OF THE CONTACTORS
3. PRESS THE KNOBS ON EITHER SIDE AND TAKE OUT FRONT HOUSING
4. REMOVE & REPLACE THE COIL
5. MOUNT THE CONTACTOR AND COMPLETE CONTROL CIRCUIT TERMINATIONS. FOR MO C30 ASSEMBLE BACK SPREADER LINKS



PRODUCT
MAINTENANCE

12

COIL REPLACEMENT FOR MO C40 TO MO C100

1. FOR MO C60 & MO C100 REMOVE SPREADER LINKS
2. REMOVE COVERS
3. UNSCREW HOUSING FIXING SCREWS

PRESS
REMOVE
4. REMOVE & REPLACE THE COIL
5. MOUNT THE CONTACTOR AND COMPLETE CONTROL CIRCUIT TERMINATIONS. FOR MO C60 & MO C100 ASSEMBLE BACK SPREADER LINKS



PRODUCT
MAINTENANCE

13

PRODUCT ORDERING- 7 DIGIT CAT NUMBERS

Contactors	1 NO Aux. Contactors	1 NC Aux. Contactors
MO C3	CS96146	CS96151
MO C5	CS96127	CS96128
MO C8.5	CS96320	CS96337
MO C10	CS96156	CS96159
MO C12.5	CS96321	CS96338
MO C15	CS90019	CS90020
MO C20	CS90021	CS90022
MO C25	CS96322	CS96339
MO C30*	CS96148	CS96153
MO C40	CS96147	CS96152
MO C50	CS96324	CS96341
MO C60*	CS96149	CS96154
MO C75	CS96150	CS96155
MO C85	CS96157	CS96160
MO C100*	CS96158	CS96161

To place and order add 4 Digit suffix as per required coil voltage and coil termination to above 7 digit number. Refer Page 14 for 4 digit Suffix for coil variants
e.g. Ordering Catalogue Number for MO C25 with
- 1NC Aux + 240 Vac 50/60 Hz coil+ Screw Type Coil Termination will be CS96339B000
* Use the contactor with spreader links



PRODUCT
MAINTENANCE

14

4 Digit Suffix for Coil			
Coil Voltage	Frequency (Hz)	Screw Terminals	Snap-on Terminals
24	50/60	G000	GOOT
110	50/60	A000	AOOT
220	50/60	K000	KOOT
240	50/60	B000	BOOT
415	50/60	D000	DOOT

* Other coil voltages available on request

Spares Description	Catalogue No.
Spare Coil-MO C3 to MO C30	CS96317*
Spare Coil-MO C40 to MO C60	CS96318*
Spare Coil-MO C75 to MO C100	CS96319*

*Add 4 digit suffix as per required coil voltage and type of coil terminations
e.g. Spare Coil Catalogue number for MO C50 for rated coil voltage 240 Vac , 50/60 Hz
and screw type coil terminations will be CS96318B000



PRODUCT
MAINTENANCE

15

Accessories Description	Catalogue No.
Auxiliary Contact Blocks	
Side 1NO+1NC (Left)	CS945800000
Side 1NO+1NC (Right)	CS945810000

SHORT CIRCUIT PROTECTION

Contactors	Ratings		HRC Fuse Rating Recommended for Short Circuit Protection
	kvar @ 440 V	Rated Current (A)	
MO C3	3	4	16
MO C5	5	7	20
MO C8.5	8.5	11	25
MO C10	10	13	32
MO C12.5	12.5	16	32
MO C15	15	20	40
MO C20	20	26	50
MO C25	25	33	63
MO C30	30	40	80
MO C40	40	52	125
MO C50	50	66	125
MO C60	60	78	160
MO C75	75	98	200
MO C85	85	112	200
MO C100	100	131	250



PRODUCT
MAINTENANCE

16



DISCLAIMER
NOTES

"This literature gives information to user about product installation, operation maintenance and disposal. This information is not exhaustive and should customer require further information, in specific cases, customer may contact customer interaction cell."

"The manufacturer assumes no responsibility for injuries, losses, damages to human beings and/or equipments due to inappropriate application of instructions, provided herein."

"Product development is a continuous process. The information given in this literature is subject to change. For latest information the customer may contact customer interaction cell"



CUSTOMER
CARE

CUSTOMER INTERACTION CELL (CIC)

BSNL / MTNL (Toll-Free): 1800 233 5858
RELIANCE (Toll-Free): 1800 200 5858
Telephone: 022 6774 5858
email: cic@LNTEBG.com
website: www.LNTEBG.com



COMPANY
INFORMATION

SP05017



**L&T Electrical & Automation,
Electrical Standard Products,**

L&T Business Park, TC-2, Tower B, 3rd Floor,
Gate No.5, Saki Vihar Road, Powai,
Mumbai - 400 072, INDIA. www.Lntebg.com

VER. 12