

Front Side

297.0

MO ACCESSORIES

**MO 0 CONTROL CONTACTOR
MO CONTACTOR 9A - 110A (MO 0/1/2/3)
MO C 3-100**

INSTRUCTION MANUAL



Manufacturer assumes no responsibility for a hazard or damage caused by incorrect or non-application of any of the instructions attached herein.

Use according to the operating instructions, professional practices, wiring rules, codes, safety regulations applicable to the given installation.

Disconnect the power and isolate before proceeding with any work on this equipment.

Always use an appropriate voltage detection device to confirm the absence of voltage.

Installation, commissioning and maintenance to be done by qualified personnel only

Hazards of electric shock and burning.

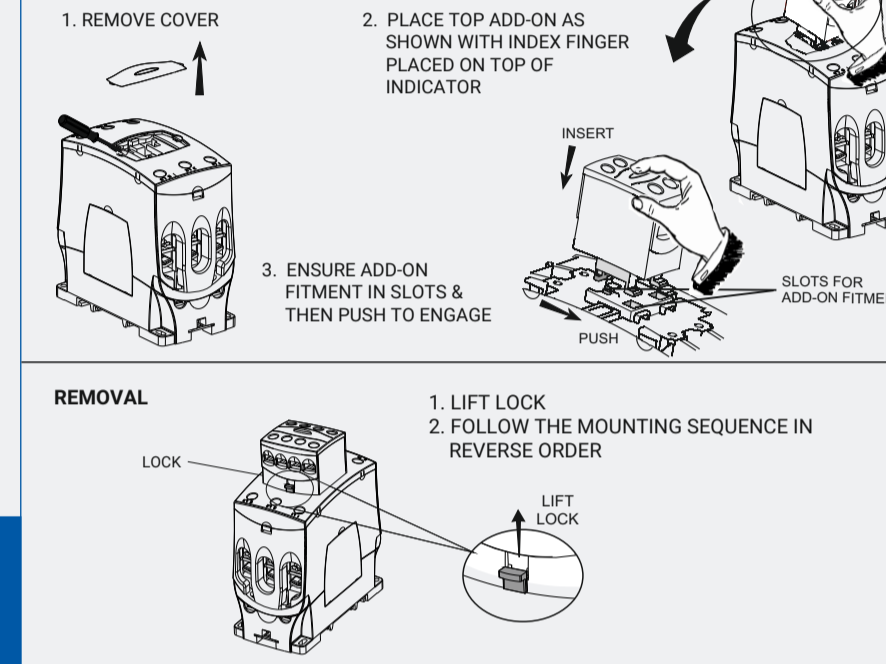
Carton & padding can be recycled.

Poly bags can be recycled separately

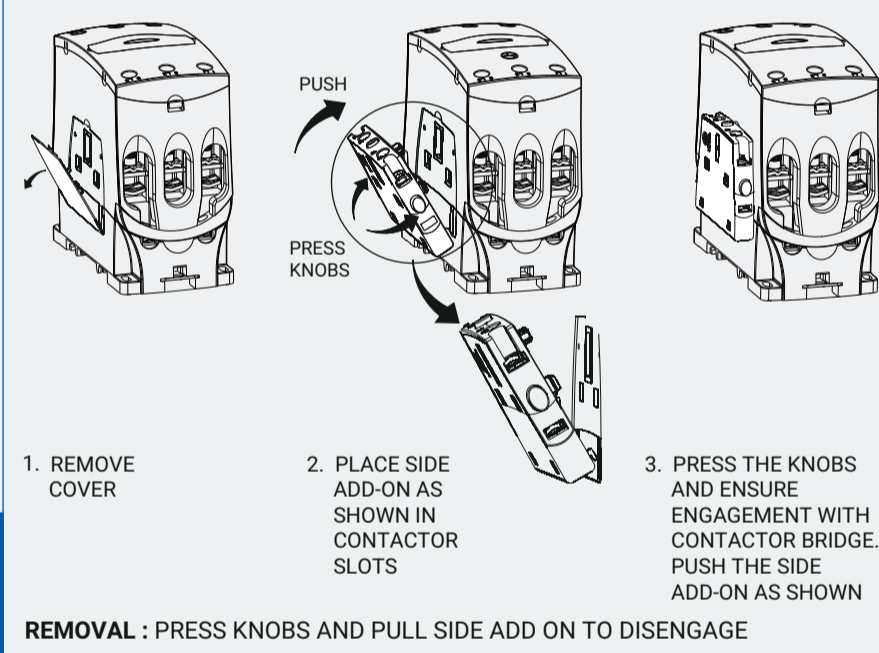
ACCESSORIES

Accessories Description	Catalogue No.	Terminal Markings
Auxiliary Contact Blocks		
Side 1NO+1NC (First Left)	CS945800000	23-24, 31-32
Side 1NO+1NC (First Right)	CS945810000	33-34, 41-42
Side 1NO+1NC (Second Left)	CS945820000	53-54, 61-62
Side 1NO+1NC (Second Right)	CS945830000	83-84, 71-72
Top 1 NO - 1 Pole	CS945850000	53-54
Top 1 NC - 1 Pole	CS945860000	51-52
Top 2 NO - 2 Pole	CS945910000	53-54, 63-64
Top 1 NO+1 NC - 2 Pole	CS945920000	53-54, 61-62
Top 2 NC - 2 Pole	CS945930000	51-52, 61-62
Top 4 NO - 4 Pole	CS945940000	53-54, 63-64, 73-74, 83-84
Top 3 NO+1 NC - 4 Pole	CS945950000	53-54, 61-62, 73-74, 83-84
Top 2 NO+2 NC - 4 Pole	CS945960000	53-54, 61-62, 71-72, 83-84
Top 1 NO+3 NC - 4 Pole	CS945970000	53-54, 61-62, 71-72, 81-82
Top 4 NC - 4 Pole	CS945980000	51-52, 61-62, 71-72, 81-82
Mechanical Interlock kit	CS945840000	01-02, 01-02

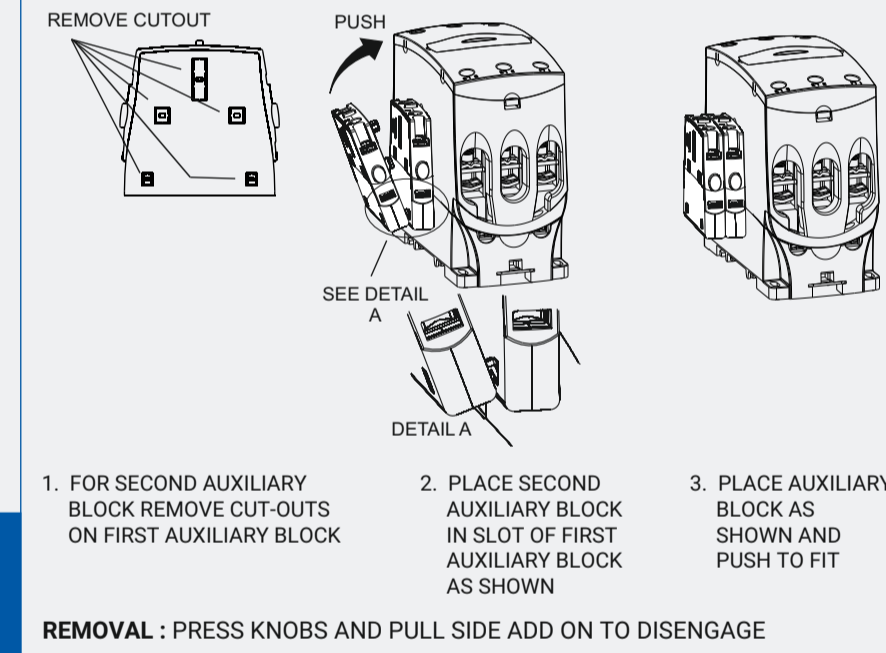
TOP ADD-ON FITMENT



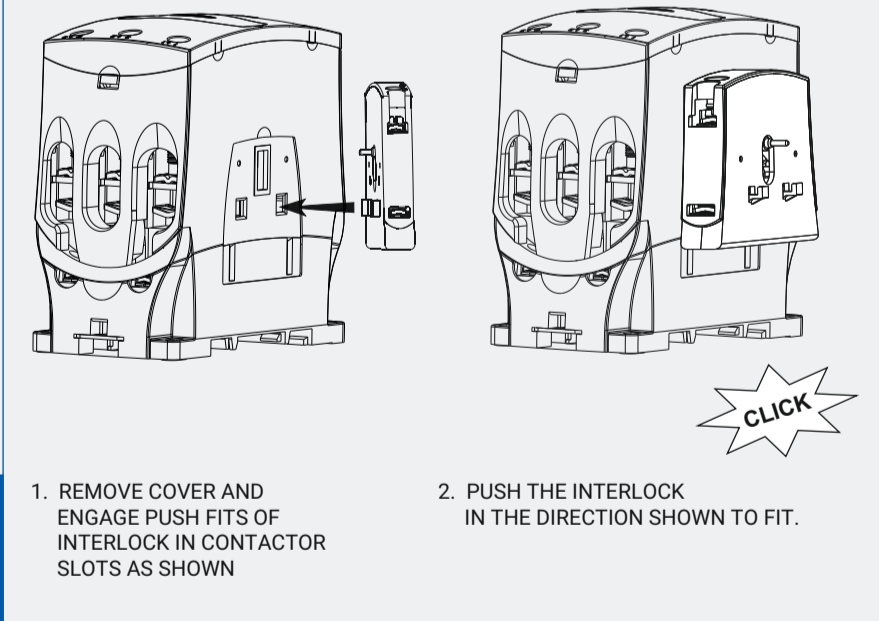
SIDE ADD-ON FITMENT



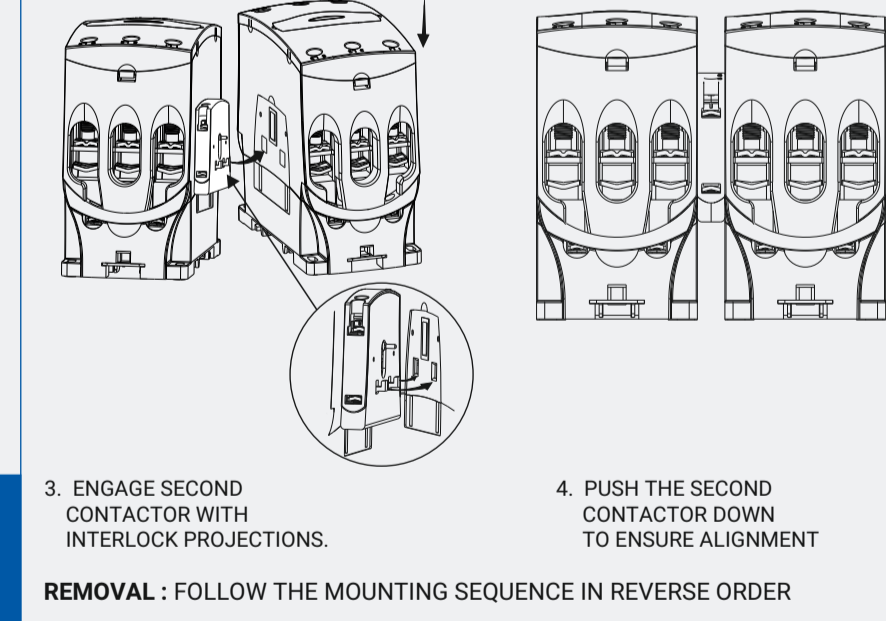
SECOND SIDE ADD-ON FITMENT



MECHANICAL INTERLOCK FITMENT MOUNTING



MECHANICAL INTERLOCK FITMENT MOUNTING

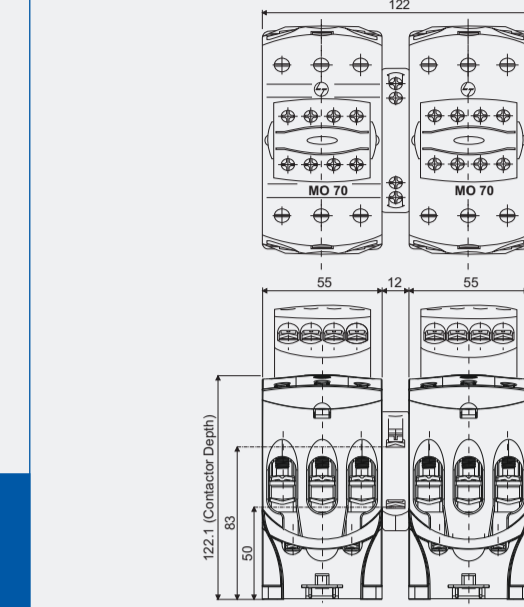


Back Side

297.0

UNLESS OTHERWISE SPECIFIED DIMENSIONS ARE IN mm.
TOLERANCE: +/-0.5mm.

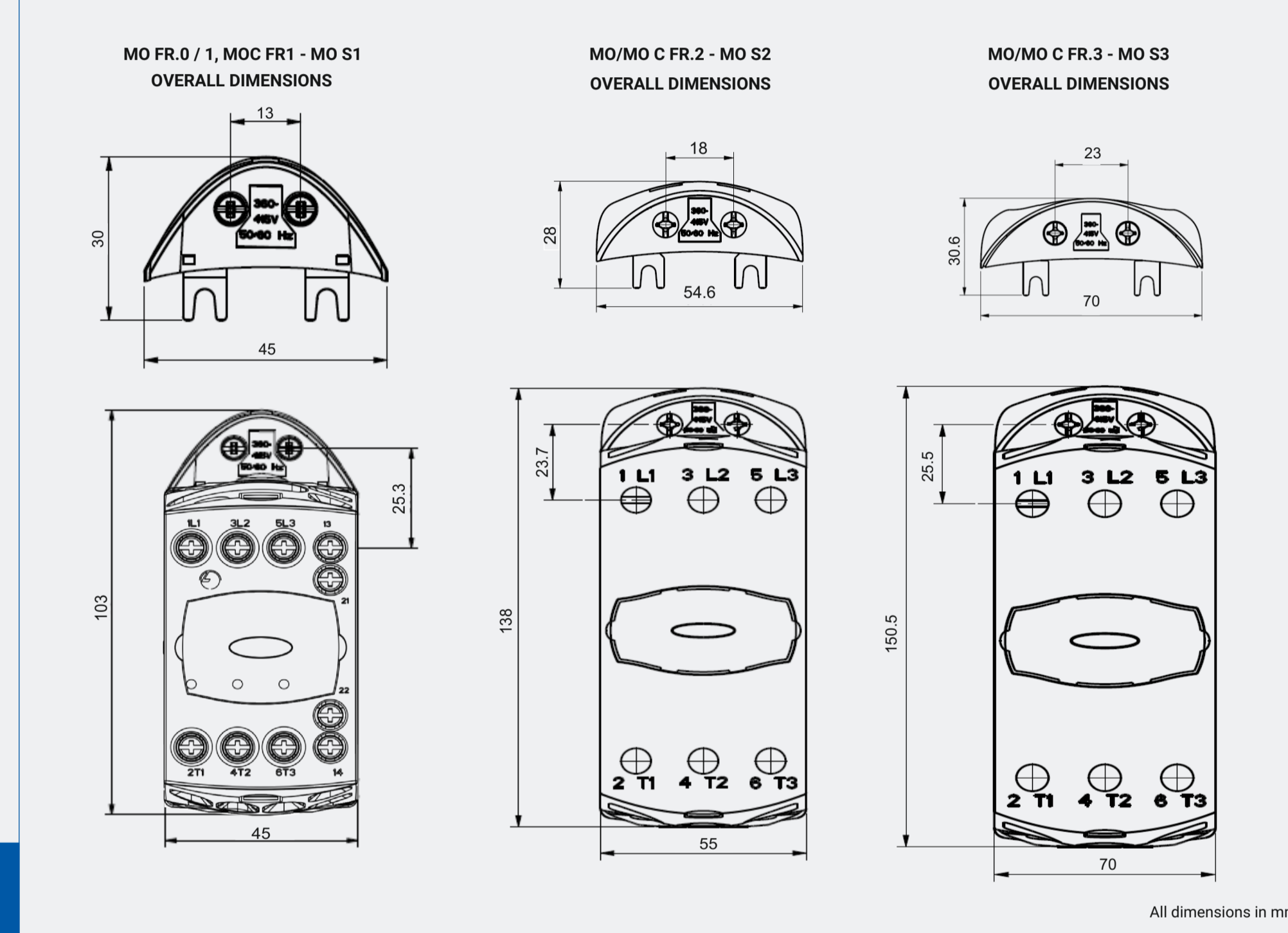
MECHANICAL INTERLOCK KIT OVERALL DIMENSIONS



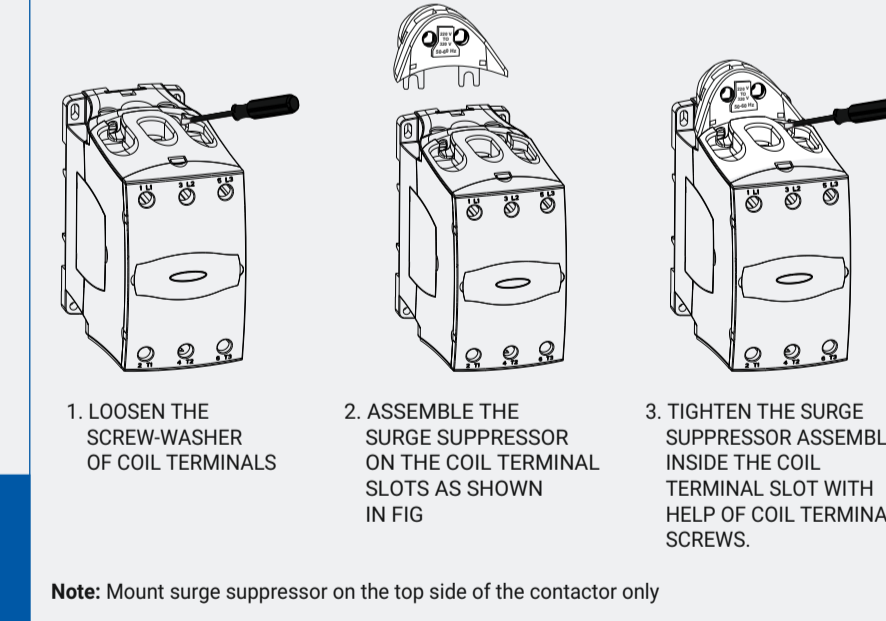
SURGE SUPPRESSOR ORDERING INFORMATION

Model	Voltage	Surge Suppressor For MO/MO C FR.0/1 CONTACTORS-MO S1
CS91706G000	24V	SURGE SUPPRESSOR FOR MO/MO C FR.0/1 CONTACTORS-MO S1
CS91706J000	42-48V	
CS91706A000	110V	
CS91706B000	220-320V	
CS91706D000	360-415V	
CS91706M000	525V	SURGE SUPPRESSOR FOR MO/MO C FR.2 CONTACTORS-MO S2
CS91707G000	24V	
CS91707J000	42-48V	
CS91707A000	110V	
CS91707B000	220-320V	
CS91707D000	360-415V	SURGE SUPPRESSOR FOR MO/MO C FR.3 CONTACTORS-MO S3
CS91707M000	525V	
CS91708G000	24V	
CS91708J000	42-48V	
CS91708A000	110V	
CS91708B000	220-320V	SURGE SUPPRESSOR FOR MO/MO C FR.3 CONTACTORS-MO S3
CS91708D000	360-415V	
CS91708M000	525V	

SURGE SUPPRESSOR OVERALL DIMENSIONS



SURGE SUPPRESSOR ASSEMBLY INSTRUCTION



"This literature gives information to user about product installation, operation maintenance and disposal. This information is not exhaustive and should customer require further information, in specific cases, customer may contact customer interaction cell."
"The manufacturer assumes no responsibility for injuries, losses, damages to human beings and/or equipments due to inappropriate application of instructions, provided herein."
"Product development is a continuous process. The information given in this literature is Subject to change. For latest information the customer may contact customer interaction cell."
"Product images are indicative"

CUSTOMER INTERACTION CELL (CIC)
Phone No: 022 6932 7800
E-mail: CIC@LK-EA.COM
Website: WWW.LK-EA.COM



VER. 1.0

THIS DRAWING AND DESIGN MUST NOT BE COPIED WITHOUT PERMISSION IN WRITING.

MATERIAL: 80 gsm MAPLITHO PAPER
NOTE : UNLESS OTHERWISE SPECIFIED LAYOUT, COLOUR SCHEME, FONT STYLES AND FOLDING SEQUENCE CONFORM TO CD01020

This component does not use any material listed hazardous by RoHS directives

DATE :	
SCALE: 1:1	
OFN/RLM No.:	
SOFTWARE: Coreldraw	
MODEL :	
PROCESS SHEET :	DEPT: 300202316
DRAWN BY :	PROJECTION
CHECKED BY :	
APPROVED BY :	
TCN 500001496851 17-07-2024 SS	

L&T Electrical & Automation
(A Unit of Schneider Electric India Private Limited)

Product Insert
MO ACCESSORIES

SP05005

SHEET | OF |

REVISIONS

