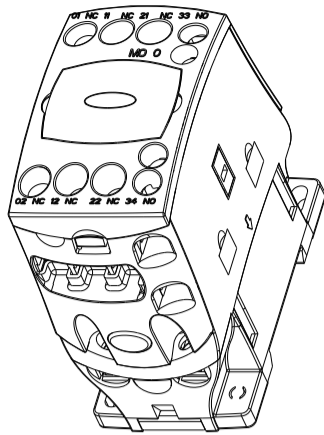


# CONTROL CONTACTOR MO 0AC

CS91623 MO 0 - 4 NO  
CS91624 MO 0 - 3NO+1NC  
CS91625 MO 0 - 2NO+2NC



DISCLAIMER

The manufacturer assumes no responsibility for injuries, losses, damages to human beings and/or equipments due to

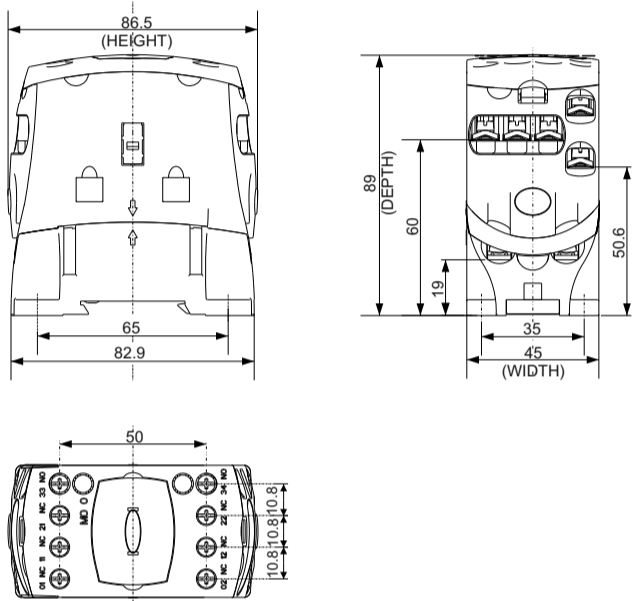
WARNING

Disconnect the power and isolate the product before proceeding with any work on this equipment. Always use an appropriate voltage detection device to confirm the absence of voltage. Installation to be done by qualified personal only. Hazards of electric shock and fire.

DISPOSAL INFORMATION

Packaging material (carton & padding) can be recycled. Poly bags can be recycled separately.

## OVERALL DIMENSIONS

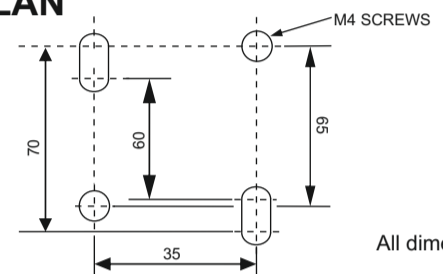


All dimensions are in mm.



PRODUCT MAINTENANCE

## DRILLING PLAN



All dimensions are in mm.

Suitable for Din Rail mounting with Din Rail type top hat rail IEC/EN 60715 - 35 X 7.5 (W X D)

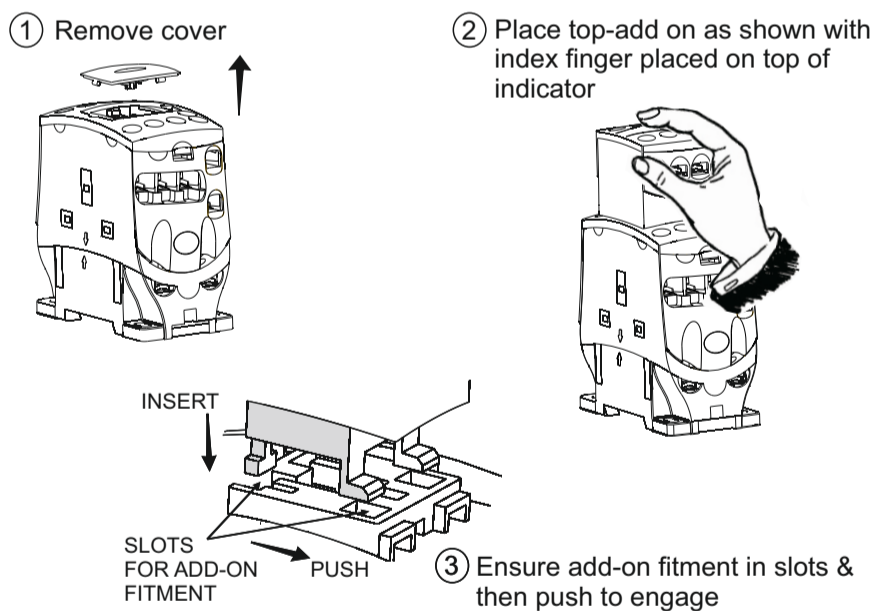
## CABLE TERMINATION

Conductor Type - Unprepared / Lugless Copper conductors		
Solid conductors		2 x 1 - 4 mm <sup>2</sup>
Stranded conductors		2 x 1 - 2.5 mm <sup>2</sup>
Pin Lug		2 x 1 - 2.5 mm <sup>2</sup>
Fork Lug		1 x 2.5 mm <sup>2</sup> D= 9.5 mm Max.
Tightening Torque		1.8 Nm



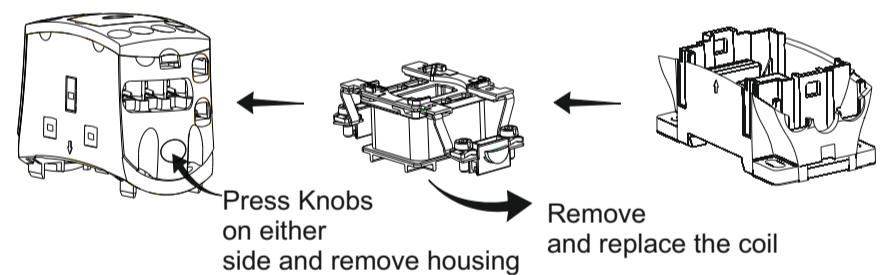
PRODUCT INSTALLATION

## TOP ADD-ON FITMENT



PRODUCT OPERATION

## COIL REPLACEMENT



## PRODUCT ORDERING & CATALOGUE NUMBERS

Contact Combination	Catalogue No.	Ordering Code	Coil Voltage
4NO	CS91623	OO	110 Vac
3NO+1NC	CS91624	OO	240 Vac
2NO+2NC	CS91625	OO	415 Vac

Ordering Code	Coil Termination
O	Screw Type
T	Fast-on



PRODUCT INSTALLATION

## ACCESSORIES

Auxiliary Contact Blocks			
Description	Catalogue No.	Description	Catalogue No.
Top 1NO - 1 Pole	CS945850000	Top 4NO - 4 Pole	CS945940000
Top 1NC - 1 Pole	CS945860000	Top 3NO+1NC - 4 Pole	CS945950000
Top 2NO - 2 Pole	CS945910000	Top 2NO+2NC - 4 Pole	CS945960000
Top 1NO+1NC - 2 Pole	CS945920000	Top 1NO+3NC - 4 Pole	CS945970000
Top 2NC - 2 Pole	CS945930000	Top 4NC - 4 Pole	CS945980000

## SPARES

Description	Catalogue No.
Spare Coil	CS94841

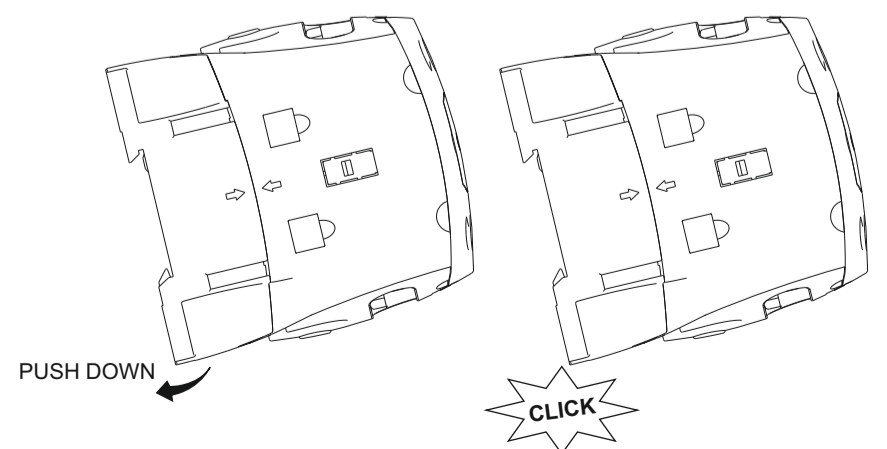
NOTE:  
Add 4 digit suffix as per required coil voltage & termination ordering code



PRODUCT OPERATION

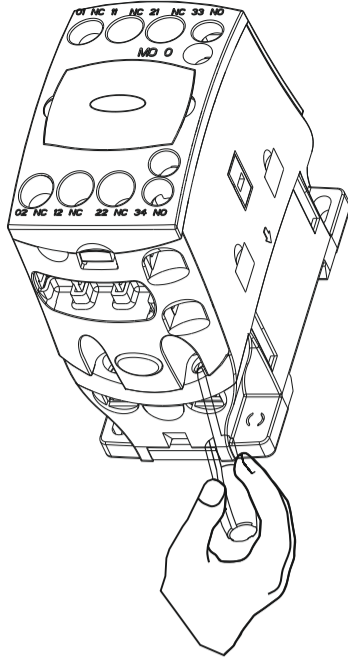
## MOUNTING ON DIN-RAIL

ENGAGE CONTACTOR WITH DIN RAIL AS SHOWN



PRODUCT INSTALLATION

# COIL TERMINATION



PRODUCT  
MAINTENANCE



DISCLAIMER  
NOTES

"This literature gives information to user about product installation, operation maintenance and disposal. This information is not exhaustive and should customer require further information, in specific cases, customer may contact customer interaction cell."

"The manufacturer assumes no responsibility for injuries, losses, damages to human beings and/or equipments due to inappropriate application of instructions, provided herein."

"Product development is a continuous process. The information given in this literature is subject to change. For latest information the customer may contact customer interaction cell"



CUSTOMER  
CARE

**CUSTOMER INTERACTION CELL (CIC)**

BSNL / MTNL (Toll-Free): 1800 233 5858  
RELIANCE (Toll-Free): 1800 200 5858  
Telephone: 022 6774 5858  
email: cic@LNTEBG.com  
website: www.LNTEBG.com



COMPANY  
INFORMATION

SP31376



**L&T Electrical & Automation,  
Electrical Standard Products,**

L&T Business Park, TC-2, Tower B, 3<sup>rd</sup> Floor,  
Gate No.5, Saki Vihar Road, Powai,  
Mumbai - 400 072, INDIA. www.Lntebg.com

VER. X.X