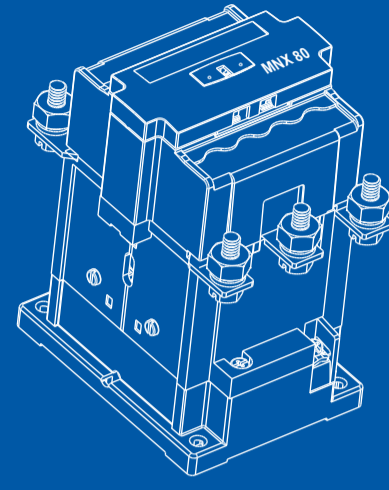


Front Side
297.00

CONTACTOR

MXN 50/ MXN 70/ MXN 80
MXN 50-2P/ MXN 70-2P/ MXN 80-2P



INSTRUCTION MANUAL



Manufacturer assumes no responsibility for a hazard or damage caused by incorrect or non-application of any of the instructions attached herein.

Use according to the operating instructions, professional practices, wiring rules, codes, safety regulations applicable to the given installation.



Disconnect the power and isolate before proceeding with any work on this equipment.



Always use an appropriate voltage detection device to Confirm the absence of voltage.



Installation, commissioning and maintenance to be done by qualified personnel only.



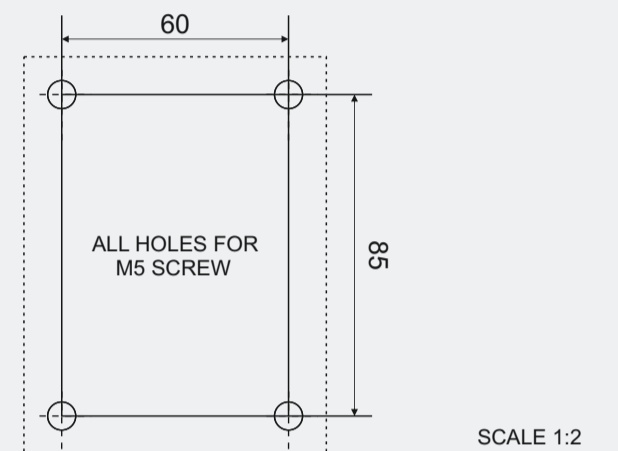
Hazards of electric shock and burning.



Carton & padding can be recycled.

Poly bags can be recycled separately.

MOUNTING DIMENSIONS

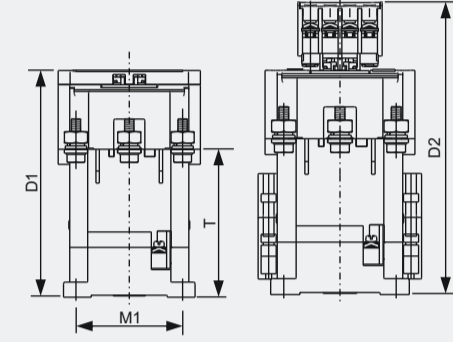


SCALE 1:2
ALL DIMENSIONS ARE IN mm.

RECOMMENDED TIGHTENING TORQUE

Terminal Description	Screw Size	Recommended Torque (Nm)
Main Pole Terminals-MNX50	M5	2.4
Main Pole Terminals-MNX70, MNX80	M6	4.5
Aux Pole/ Coil/ Add on block Terminals	M3.5	1.1

OVERALL DIMENSIONS

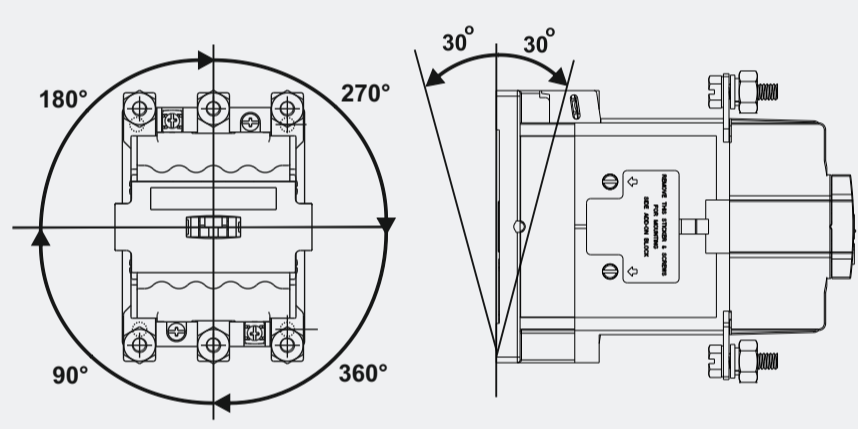


LABEL	MXN 50	MXN 70/80
W1	89	89
W2	89	89
H	129	129
D1	127.7	127.7
D2	156	156
M1	60	60
M2	85	85
T	83	83.5
P	30	30
S	96	96

ALL DIMENSIONS ARE IN mm.

Note: Dimension for 2 Pole contactor is same as dimension for 3 Pole contactor.

MOUNTING



Termination capacity

Conductor type	MXN 50-80
Solid conductors (mm ²)	-
Multi strand conductors (mm ²)	-
Cable with Lug (mm ²)	1 x 35

ACCESSORIES

Accessories Description	Catalogue No.	Terminal Markings
Auxiliary Contact Blocks		
Side 1NO+1NC (First Left)	CS942010000	13-14, 21-22
Side 1NO+1NC (First Right)	CS942020000	43-44, 31-32
Side 1NO+1NC (Second Left)	CS942030000	53-54, 61-62
Side 1NO+1NC (Second Right)	CS942040000	83-84, 71-72
Top 4NO - 4 Pole	CS941120000	53-54, 63-64, 73-74, 83-84
Top 3NO+1NC - 4 Pole	CS941130000	53-54, 61-62, 73-74, 83-84
Top 2NO+2NC - 4 Pole	CS941140000	53-54, 61-62, 71-72, 83-84
Top 1NO+3NC - 4 Pole	CS941150000	53-54, 61-62, 71-72, 81-82
Top 4NC - 4 Pole	CS941160000	51-52, 61-62, 71-72, 81-82
Top 2 NO - 2 Pole	CS941170000	53-54, 63-64
Top 1NO+1NC - 2 Pole	CS941180000	53-54, 61-62
Top 2 NC - 2 Pole	CS941190000	51-52, 61-62
Top 1 NO - 2 Pole	CS941200000	53-54
Top 1 NC - 2 Pole	CS941210000	61-62
Mech. Interlock Kit: MNX-M4	CS941970000	
Surge Suppressor(24-48V)	CS94163J000	
Surge Suppressor(110-240V)	CS94163B000	MNX - S3
Surge Suppressor(360-415V)	CS94163D000	

MIL KIT MOUNTING

MECHANICAL INTERLOCK KIT CONTAIN:

- MECHANICAL INTERLOCK ASSEMBLY - 1 No
- GUIDE ASSEMBLY - 4 Nos
- CONTACTOR MOUNTING SCREWS & WASHERS - 8 Nos
- SIDE ADD-ON BLOCK - 4 Nos.

MECHANICAL INTERLOCK KIT MOUNTING PROCEDURE:

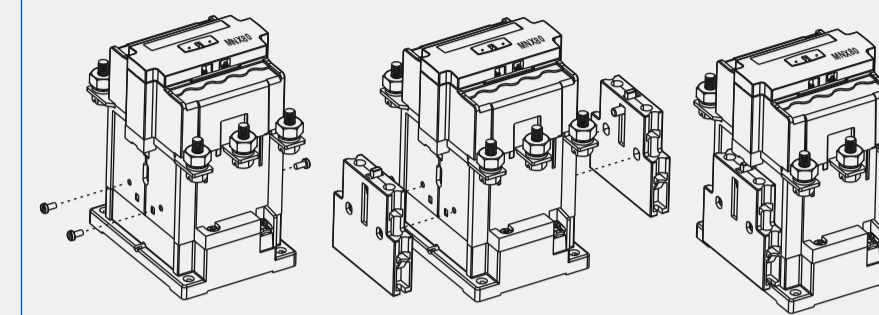
- SIDE ADD-ON BLOCK: MOUNT SIDE ADD-ON BLOCK ON BOTH SIDE OF CONTACTOR-1. REFER SKETCH AS PER ①.
- GUIDE ASSEMBLY: INSERT PROJECTED PORTION OF GUIDE ASSEMBLY IN THE HOLE OF ADD-ON BLOCK. MOUNT GUIDE ASSEMBLY ON BOTH SIDE OF CONTACTOR-1. REFER SKETCH AS PER ②.
- CONTACTOR MOUNTING: PLACE ABOVE CONTACTOR-1 ON ONE SIDE OF BASE PLATE ASSEMBLY. USE SCREWS AND WASHERS (PROVIDED WITH MIL KIT) TO FIX CONTACTOR ON BASE PLATE.
- REPEAT ABOVE STEP 1 AND 2 FOR CONTACTOR-2.
- PLACE AND FIX CONTACTOR-2 ON ANOTHER SIDE OF BASE PLATE. REFER SKETCH AS PER ③.

MECHANICAL INTERLOCK KIT WITH CONTACTORS ARE NOW READY FOR INSTALLATION.

Back Side
297.0

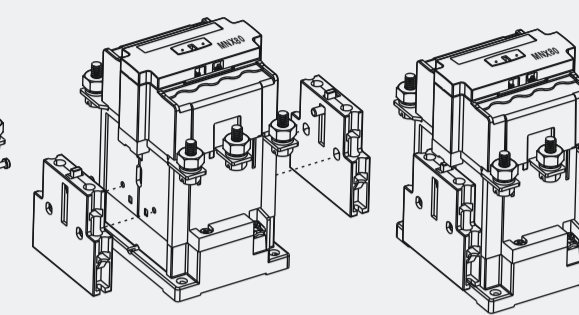
UNLESS OTHERWISE SPECIFIED DIMENSIONS ARE IN mm.
TOLERANCE: +/-0.5mm.

MIL KIT MOUNTING



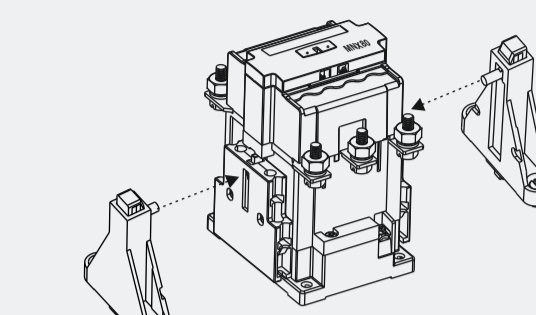
①

i. REMOVE EXISTING SCREWS FROM CONTACTOR



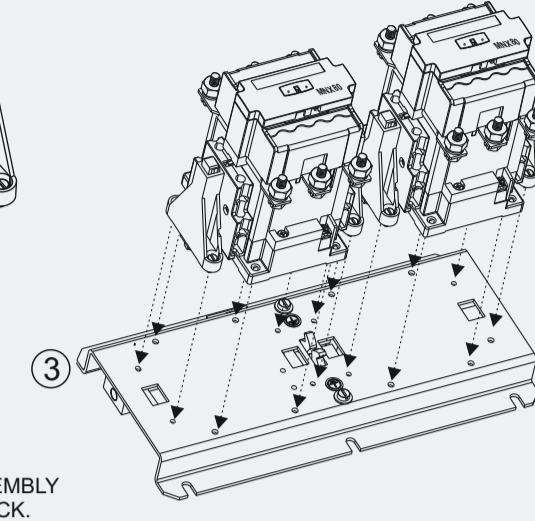
②

ii. FOR BOTH SIDE ADD-ON BLOCKS, ALIGN THE ACTUATOR OF ADD-ON WITH HOLE ON THE CONTACT BRIDGE OF CONTACTOR.



③

iii. FIX THE ADD-ON CONTACTOR WITH SCREWS PROVIDED ALONG WITH ADD-ON.

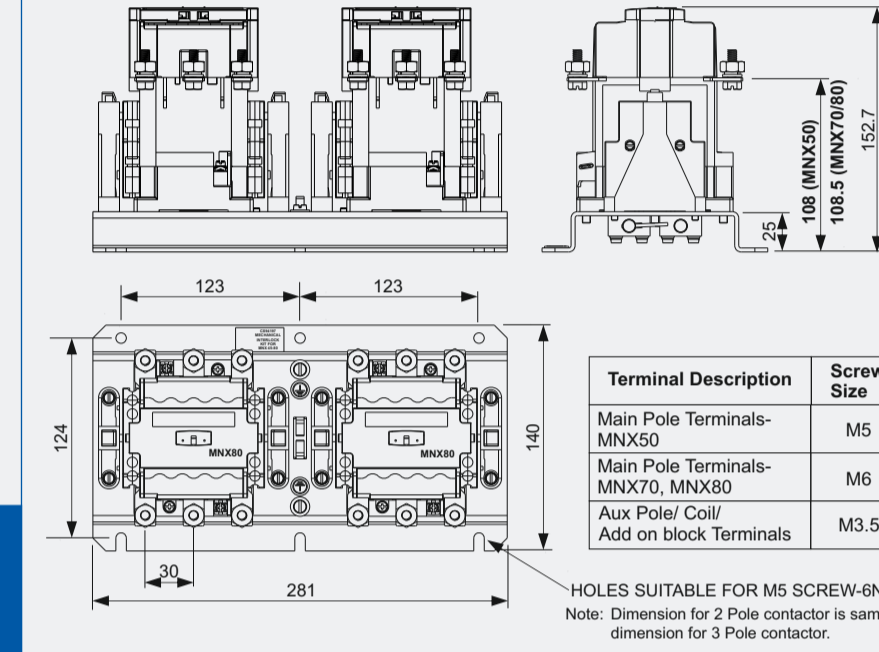


④

INSERT PROJECTED PORTION OF GUIDE ASSEMBLY IN THE COUNTERBORE HOLE OF ADD-ON BLOCK. MOUNT GUIDE ASSEMBLY ON BOTH SIDE OF CONTACTOR

PLACE AND FIX CONTACTOR ON BASE PLATE

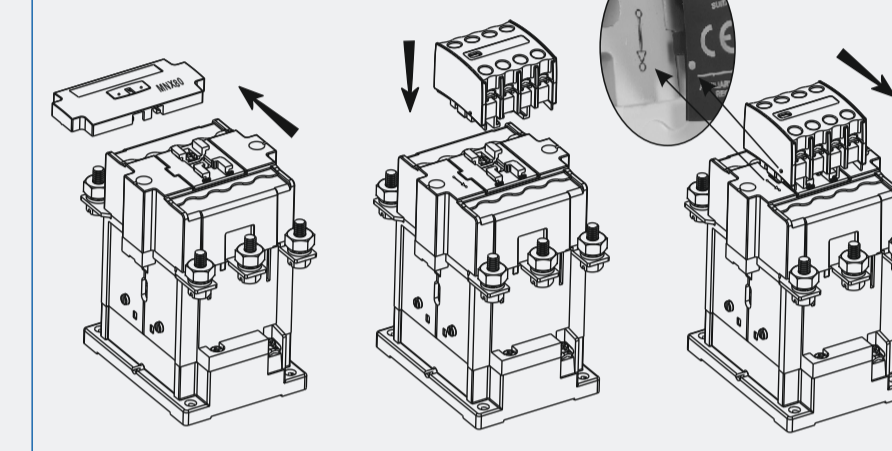
MIL KIT OVERALL DIMENSIONS



Terminal Description	Screw Size
Main Pole Terminals-MNX50	M5
Main Pole Terminals-MNX70, MNX80	M6
Aux Pole/ Coil/ Add on block Terminals	M3.5

HOLES SUITABLE FOR M5 SCREW-6Nos
Note: Dimension for 2 Pole contactor is same as dimension for 3 Pole contactor.

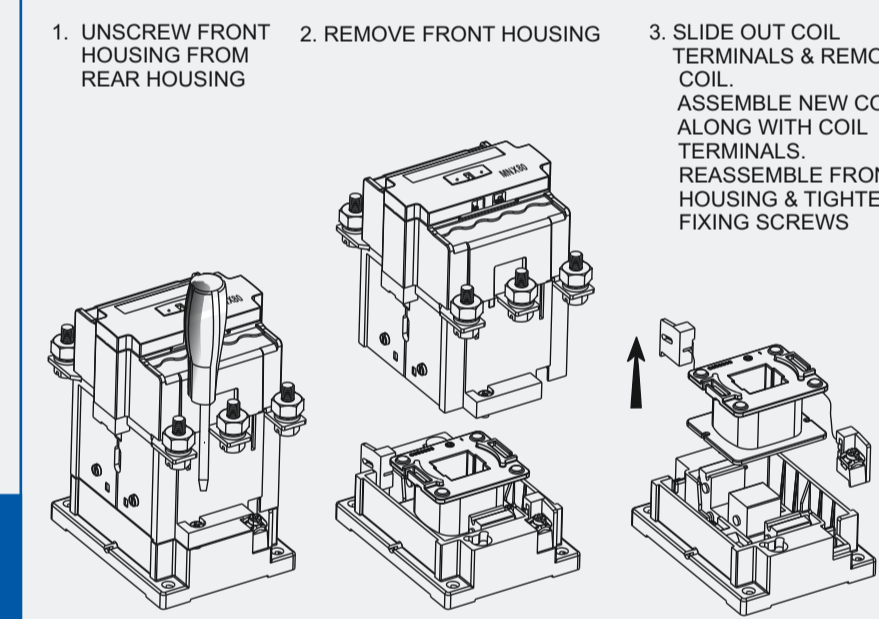
TOP ADD-ON FITMENT



- REMOVE TOP COVER
- MATCH DOTS & PLACE ADD-ON AS SHOWN
- PUSH ADD-ON TO ENGAGE COMPLETELY

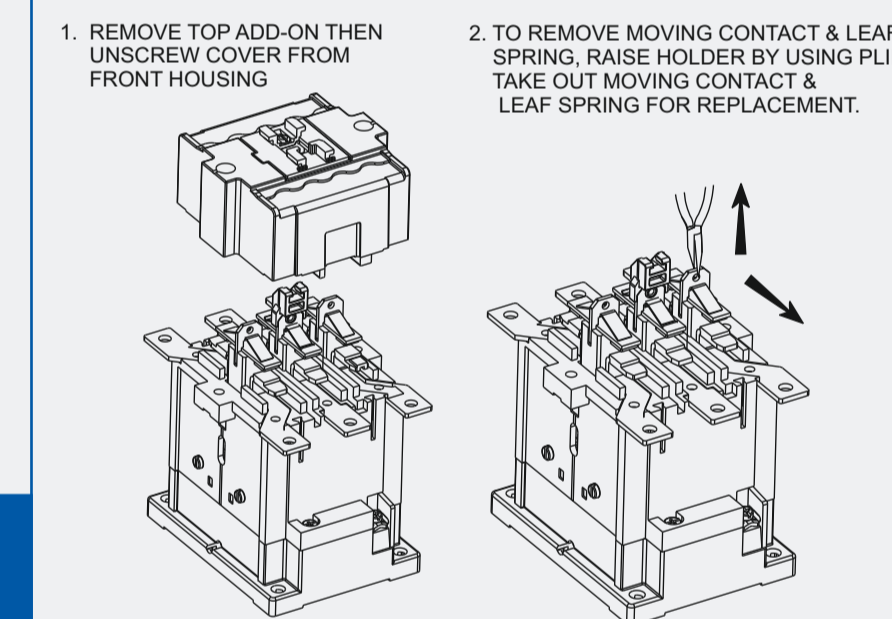
REMOVAL: LIFT LOCK OF ADD ON & FOLLOW THE SEQUENCE IN REVERSE ORDER

COIL REPLACEMENT



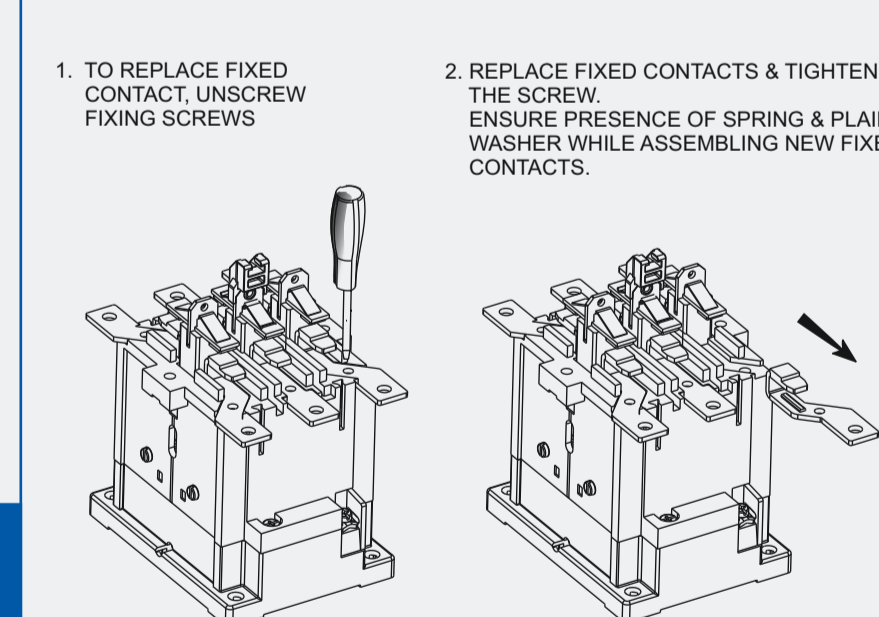
- UNSCREW FRONT HOUSING FROM REAR HOUSING
- REMOVE FRONT HOUSING
- SLIDE OUT COIL TERMINALS & REMOVE COIL. ASSEMBLE NEW COIL ALONG WITH COIL TERMINALS. REASSEMBLE FRONT HOUSING & TIGHTEN FIXING SCREWS

CONTACT INSPECTION AND REPLACEMENT



- REMOVE TOP ADD-ON THEN UNSCREW COVER FROM FRONT HOUSING
- TO REMOVE MOVING CONTACT & LEAF SPRING, RAISE HOLDER BY USING PLIER. TAKE OUT MOVING CONTACT & LEAF SPRING FOR REPLACEMENT.

CONTACT INSPECTION AND REPLACEMENT



- TO REPLACE FIXED CONTACT UNSCREW FIXING SCREWS
- REPLACE FIXED CONTACTS & TIGHTEN THE SCREW. ENSURE PRESENCE OF SPRING & PLAIN WASHER WHILE ASSEMBLING NEW FIXED CONTACTS.

"This literature gives information to user about product installation, operation maintenance and disposal. This information is not exhaustive and should customer require further information, in specific cases, customer may contact customer interaction cell."
"The manufacturer assumes no responsibility for injuries, losses, damages to human beings and/or equipments due to inappropriate application of instructions, provided herein."
"Product development is a continuous process. The information given in this literature is Subject to change. For latest information the customer may contact customer interaction cell."
"Product images are indicative"

CUSTOMER INTERACTION CELL (CIC)
Phone No: 022 6932 7800
E-mail: CIC@LK-EA.COM
Website: WWW.LK-EA.COM



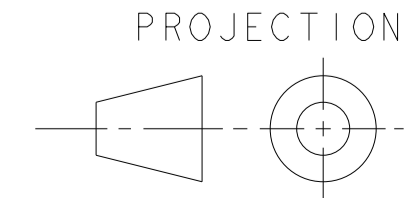
VER. 1.0 SP02713

THIS DRAWING AND DESIGN MUST NOT BE COPIED WITHOUT PERMISSION IN WRITING.

MATERIAL: 80 gsm MAPLITHO PAPER
NOTE : UNLESS OTHERWISE SPECIFIED LAYOUT, COLOUR SCHEME, FONT STYLES AND FOLDING SEQUENCE CONFORM TO CD01020

This component does not use any material listed hazardous by RoHS directives

DATE:	
SCALE: 1:1	
OFN/RLM No.:	
SOFTWARE: Coreldraw	
MODEL:	
PROCESS SHEET:	DEPT: 300202316
TCN 500001470535 13-05-2024 SS	DRAWN BY:
REVISIONS	CHECKED BY:
	APPROVED BY:



L&T Electrical & Automation
(A Unit of Schneider Electric India Private Limited)

Product Insert
CONTACTOR (MNX50-80)

SP02713

SHEET 1 OF 1