



Electrical & Automation

POWERING A NON-STOP INDIA



Maximum Retail Prices
For AU
Effective from 01-06-26



FROM THE COO'S DESK.



Electrical & Automation

Dear Partner,

India is building at a pace and scale that few could have imagined a decade ago. **Infrastructure, metro networks, buildings, green energy corridors, the evolving new energy landscape including solar, modernising factories, and connected homes,** the demand on every link in the electrical and automation value chain has never been greater. It is a privilege to stand at the centre of this transformation, and it is a privilege we share with you.

As we step into this new phase of growth, we are sharing our updated price list. **This revision reflects the investments we continue to make in Made in India manufacturing, R&D, and the service infrastructure that you and your customers rely on every day, across every scale, segment, geography, and across all sources of power.** Our commitment to transparency, quality, and reliability remains the foundation of everything we do together.

At Lauritz Knudsen, we carry over 70+ years of experience built in India, for India. Today, that legacy powers a portfolio spanning **Low Voltage solutions, Industrial Automation, Software and Services,** designed to deliver seamlessly across diverse applications and evolving energy needs. From conventional systems to the rapidly expanding renewable and solar ecosystem, we enable consistent, high performance outcomes that power a **Non Stop India.**

It is your expertise, your relationships, and your reach that turn our solutions into real impact. Every specification advised, every installation completed, every customer served, that is where our shared purpose comes to life. We remain committed to equipping you with the products, training, and support that enable you to deliver with confidence.

As India accelerates toward its Viksit Bharat 2047 vision, the role of reliable, intelligent, and future ready electrical infrastructure has never been more critical. We are ready for what comes next, and we are proud to partner with you on this journey.

Our products and solutions are **built in India and engineered for all.**

We Listen, We Partner, We Innovate

A handwritten signature in blue ink, reading "Naresh Kumar".

Warm regards,
Naresh Kumar
COO & Sr. VP, Electrical Standard Products
Lauritz Knudsen Electrical & Automation

Translating Technology Into Real Benefits

AU Solutions for final distribution offer a unique blend of safety, convenience and performance.

Each product in the AU Solutions range is designed to provide lasting benefits.

Lowest Watt Loss

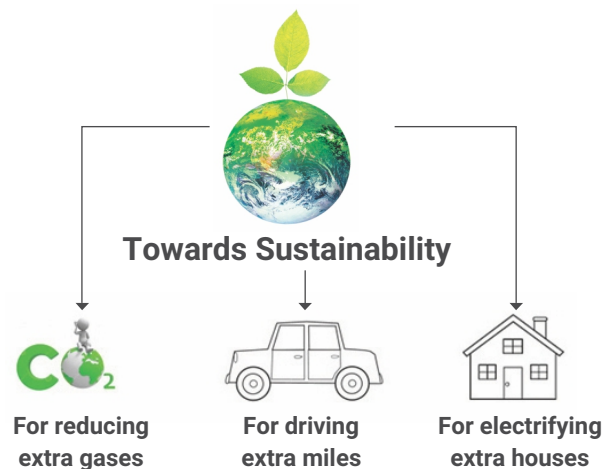
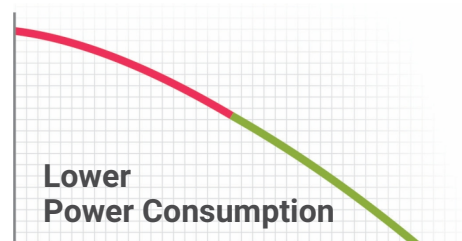
Saves money and natural resources

MCBs from AU Solutions offer the lowest watt loss in the industry. On an average, the watt loss values are almost 55% lower than those prescribed by IEC.

Lower watt loss means lower power consumption, which directly translates into monetary savings. Beyond tangible benefits, lower power requirement also hints at lower consumption of natural resources used for producing energy. In a nutshell, these MCBs are a small, yet significant step towards sustainability.

Maximum Power Loss Per Pole (W)

Current Ratings (A)	As Per IS/IEC 60898	For AU Range of MCBs	% lower
0.5	3	1.9	38%
1	3	2	33%
1.6	3	2.1	30%
2	3	2.1	30%
3	3	2.1	30%
4	3	2.1	30%
5	3	2.1	30%
6	3	1.1	63%
10	3	1.2	60%
16	3.5	1.8	50%
20	4.5	1.9	58%
25	4.5	2.1	54%
32	6	2.4	60%
40	7.5	3.1	59%
50	9	4.1	54%
63	13	4.3	67%
80	15	3.9	74%
100	15	6.2	59%
125	20	9.2	54%



Note:

[Black colour : HSN code]
Current GST 18%, subject to changes
as per Govt. notification

Short-circuit Fault Indicator in MCBs

Easy diagnosis, saves downtime

With the unique short-circuit fault indication feature, one can conclude if the MCB has tripped due to a short-circuit fault.

It helps in reducing downtime as the faulty phase and cause of MCB tripping are easily detected.

If the MCB has tripped on 'overload', non-critical loads can be switched off before switching the MCB on again.

In the case of a short-circuit fault, the location and cause of the short-circuit should be identified and the necessary corrective action should be taken.

UNIQUE
BENEFIT



UNIQUE
BENEFIT

Earth Leakage Fault Indication in RCCDs

- › Clear indication by yellow coloured flag
- › Easy detection of occurrence of earth leakage

Flexibility

- › **Flexibility in Termination**
 - ›› Bi-connect terminals offer busbar or cable termination at both incoming and outgoing sides
- › **Line-Load Reversibility**
 - ›› Either of the sides of an RCCB can be used to terminate supply or load
- › **RCCBs removability with busbar in place**
 - ›› This feature, with a uniquely designed DIN clip, offers easy removal of DIN mounted RCCBs while the connection busbar is in place with adjoining devices
 - ›› Offers great flexibility in installation process
 - ›› Reduces installation time

Communication Capability

For smart systems

With the communication capability of AU Solutions, one can monitor and control various devices remotely.

The complete communication system can be deployed for effective energy management.



RoHS Compliance

Environment-friendly

RoHS compliant AU Solutions do not use any substances which are hazardous to the environment.



MCBs (Miniature Circuit Breakers) [8536]

Range Highlights

- › Conforms to IS/IEC 60898-1, EN 60898-1, IEC 60898-1, EN 60947-2, IS/IEC 60947-2
- › Wide Range of Current Ratings - 0.5A to 125A
- › Short circuit Breaking Capacity
 - 10kA (IS/IEC 60898-1, EN 60898-1) - 0.5A to 63A
 - 15kA (IS/IEC 60947-2) - 0.5 to 40A; 10kA (IS/IEC 60947-2) - 50A & 63A
 - 15kA (IS/IEC 60947-2, EN 60947-2) - 80, 100 & 125A
- › B, C & D Characteristics
- › Available in SP, DP, TP, FP, SPN and TPN
- › Suitable for DC Application
- › Suitable for Isolation
- › Protection Degree - IP 20
- › Availability of wide Range of Site Mountable Accessories

Standard Version AU-10 | 10kA as per IS/IEC 60898-1



Rating	Modules 1 Mod = 17.5 mm	B Curve CAT Nos.	M.R.P. (₹) Per Unit	C Curve CAT Nos.	M.R.P. (₹) Per Unit	D Curve CAT Nos.	M.R.P. (₹) Per Unit
Single Pole							
0.5A	1	-	-	AU10S10E53C	715	AU10S10E53D	720
1A	1	-	-	AU10S10013C	715	AU10S10013D	720
1.6A	1	-	-	AU10S11E63C	715	AU10S11E63D	720
2A	1	-	-	AU10S10023C	715	AU10S10023D	720
3A	1	-	-	AU10S10033C	715	AU10S10033D	720
4A	1	-	-	AU10S10043C	715	AU10S10043D	720
5A	1	-	-	AU10S10053C	715	AU10S10053D	720
6A	1	AU10S10063B	480	AU10S10063C	480	AU10S10063D	605
10A	1	AU10S10103B	480	AU10S10103C	480	AU10S10103D	605
16A	1	AU10S10163B	480	AU10S10163C	480	AU10S10163D	605
20A	1	AU10S10203B	480	AU10S10203C	480	AU10S10203D	605
25A	1	AU10S10253B	480	AU10S10253C	480	AU10S10253D	605
32A	1	AU10S10323B	480	AU10S10323C	480	AU10S10323D	605
40A	1	AU10S10403B	1025	AU10S10403C	1025	AU10S10403D	1080
50A	1	AU10S10503B	1025	AU10S10503C	1025	AU10S10503D	1080
63A	1	AU10S10633B	1025	AU10S10633C	1025	AU10S10633D	1080
Two Pole							
0.5A	2	-	-	AU10S20E53C	1955	AU10S20E53D	1960
1A	2	-	-	AU10S20013C	1955	AU10S20013D	1960
1.6A	2	-	-	AU10S21E63C	1955	AU10S21E63D	1960
2A	2	-	-	AU10S20023C	1955	AU10S20023D	1960
3A	2	-	-	AU10S20033C	1955	AU10S20033D	1960
4A	2	-	-	AU10S20043C	1955	AU10S20043D	1960
5A	2	-	-	AU10S20053C	1955	AU10S20053D	1960
6A	2	AU10S20063B	1410	AU10S20063C	1410	AU10S20063D	1445
10A	2	AU10S20103B	1410	AU10S20103C	1410	AU10S20103D	1445
16A	2	AU10S20163B	1410	AU10S20163C	1410	AU10S20163D	1445
20A	2	AU10S20203B	1410	AU10S20203C	1410	AU10S20203D	1445
25A	2	AU10S20253B	1410	AU10S20253C	1410	AU10S20253D	1445
32A	2	AU10S20323B	1410	AU10S20323C	1410	AU10S20323D	1445
40A	2	AU10S20403B	2270	AU10S20403C	2270	AU10S20403D	2360
50A	2	AU10S20503B	2270	AU10S20503C	2270	AU10S20503D	2360
63A	2	AU10S20633B	2270	AU10S20633C	2270	AU10S20633D	2360
Three Pole							
0.5A	3	-	-	AU10S30E53C	2905	AU10S30E53D	2935
1A	3	-	-	AU10S30013C	2905	AU10S30013D	2935
1.6A	3	-	-	AU10S31E63C	2905	AU10S31E63D	2935
2A	3	-	-	AU10S30023C	2905	AU10S30023D	2935
3A	3	-	-	AU10S30033C	2905	AU10S30033D	2935
4A	3	-	-	AU10S30043C	2905	AU10S30043D	2935
5A	3	-	-	AU10S30053C	2905	AU10S30053D	2935
6A	3	AU10S30063B	2315	AU10S30063C	2315	AU10S30063D	2345
10A	3	AU10S30103B	2315	AU10S30103C	2315	AU10S30103D	2345
16A	3	AU10S30163B	2315	AU10S30163C	2315	AU10S30163D	2345
20A	3	AU10S30203B	2315	AU10S30203C	2315	AU10S30203D	2345
25A	3	AU10S30253B	2315	AU10S30253C	2315	AU10S30253D	2345
32A	3	AU10S30323B	2315	AU10S30323C	2315	AU10S30323D	2345
40A	3	AU10S30403B	3530	AU10S30403C	3530	AU10S30403D	3630
50A	3	AU10S30503B	3530	AU10S30503C	3530	AU10S30503D	3630
63A	3	AU10S30633B	3530	AU10S30633C	3530	AU10S30633D	3630

Note: Standard Pack Quantity for MCB : SP - 12 Nos., DP/SPN - 6 Nos., TP - 4 Nos., FP/TPN - 3 Nos.

Standard Version AU-10 | 10kA as per IS/IEC 60898-1



Rating	Modules 1 Mod = 17.5 mm	B Curve CAT Nos.	M.R.P. (₹) Per Unit	C Curve CAT Nos.	M.R.P. (₹) Per Unit	D Curve CAT Nos.	M.R.P. (₹) Per Unit
Four Pole							
0.5A	4	-	-	AU10S40E53C	3555	AU10S40E53D	3580
1A	4	-	-	AU10S40013C	3555	AU10S40013D	3580
1.6A	4	-	-	AU10S41E63C	3555	AU10S41E63D	3580
2A	4	-	-	AU10S40023C	3555	AU10S40023D	3580
3A	4	-	-	AU10S40033C	3555	AU10S40033D	3580
4A	4	-	-	AU10S40043C	3555	AU10S40043D	3580
5A	4	-	-	AU10S40053C	3555	AU10S40053D	3580
6A	4	AU10S40063B	3070	AU10S40063C	3070	AU10S40063D	3080
10A	4	AU10S40103B	3070	AU10S40103C	3070	AU10S40103D	3080
16A	4	AU10S40163B	3070	AU10S40163C	3070	AU10S40163D	3080
20A	4	AU10S40203B	3070	AU10S40203C	3070	AU10S40203D	3080
25A	4	AU10S40253B	3070	AU10S40253C	3070	AU10S40253D	3080
32A	4	AU10S40323B	3070	AU10S40323C	3070	AU10S40323D	3080
40A	4	AU10S40403B	4380	AU10S40403C	4380	AU10S40403D	4555
50A	4	AU10S40503B	4380	AU10S40503C	4380	AU10S40503D	4555
63A	4	AU10S40633B	4380	AU10S40633C	4380	AU10S40633D	4555
SPN							
0.5A	2	-	-	AU10SS0E53C	1850	-	-
1A	2	-	-	AU10SS0013C	1850	-	-
1.6A	2	-	-	AU10SS1E63C	1850	-	-
2A	2	-	-	AU10SS0023C	1850	-	-
3A	2	-	-	AU10SS0033C	1850	-	-
4A	2	-	-	AU10SS0043C	1850	-	-
5A	2	-	-	AU10SS0053C	1850	-	-
6A	2	-	-	AU10SS0063C	1305	-	-
10A	2	-	-	AU10SS0103C	1305	-	-
16A	2	-	-	AU10SS0163C	1305	-	-
20A	2	-	-	AU10SS0203C	1305	-	-
25A	2	-	-	AU10SS0253C	1305	-	-
32A	2	-	-	AU10SS0323C	1305	-	-
40A	2	-	-	AU10SS0403C	2100	-	-
50A	2	-	-	AU10SS0503C	2100	-	-
63A	2	-	-	AU10SS0633C	2100	-	-
TPN							
0.5A	4	-	-	AU10ST0E53C	3410	-	-
1A	4	-	-	AU10ST0013C	3410	-	-
1.6A	4	-	-	AU10ST1E63C	3410	-	-
2A	4	-	-	AU10ST0023C	3410	-	-
3A	4	-	-	AU10ST0033C	3410	-	-
4A	4	-	-	AU10ST0043C	3410	-	-
5A	4	-	-	AU10ST0053C	3410	-	-
6A	4	-	-	AU10ST0063C	2865	-	-
10A	4	-	-	AU10ST0103C	2865	-	-
16A	4	-	-	AU10ST0163C	2865	-	-
20A	4	-	-	AU10ST0203C	2865	-	-
25A	4	-	-	AU10ST0253C	2865	-	-
32A	4	-	-	AU10ST0323C	2865	-	-
40A	4	-	-	AU10ST0403C	4135	-	-
50A	4	-	-	AU10ST0503C	4135	-	-
63A	4	-	-	AU10ST0633C	4135	-	-

Note: Standard Pack Quantity for MCB : SP - 12 Nos., DP/SPN - 6 Nos., TP - 4 Nos., FP/TPN - 3 Nos.

MCBs (Miniature Circuit Breakers) : 80A-125A [8536]

Range Highlights

- › Short circuit Breaking Capacity - 15kA (IS/IEC 60947-2, EN 60947-2)
- › Suitable for Isolation
- › C & D Characteristics
- › Protection Degree - IP 20
- › Available in SP, DP, TP and FP
- › Availability of wide Range of Site Mountable Accessories



Rating	Modules 1 Mod = 17.5 mm	C Curve Cat. No.	M.R.P. (₹) Per Unit	D Curve Cat. No.	M.R.P. (₹) Per Unit
Single Pole (SP)					
80A	1.5	AU15S10803C	3685	AU15S10803D	4195
100A	1.5	AU15S11003C	4130	AU15S11003D	4690
125A	1.5	AU15S11253C	4445	AU15S11253D	5070
Double Pole (DP)					
80A	3	AU15S20803C	8160	AU15S20803D	9290
100A	3	AU15S21003C	8705	AU15S21003D	9900
125A	3	AU15S21253C	9580	AU15S21253D	10890
Three Pole (TP)					
80A	4.5	AU15S30803C	12875	AU15S30803D	14660
100A	4.5	AU15S31003C	13735	AU15S31003D	15610
125A	4.5	AU15S31253C	15240	AU15S31253D	17320
Four Pole (FP)					
80A	6	AU15S40803C	16820	AU15S40803D	19100
100A	6	AU15S41003C	17495	AU15S41003D	19905
125A	6	AU15S41253C	19815	AU15S41253D	22520

CERTIFIED TO LEAD, TRUSTED FOR SAFETY.



BIS-Certified HR MCBs Range - 80A, 100A & 125A

RCCBs (Residual Current Circuit Breakers) [8536]

Range Highlights*

- › Conforms to IEC 61008-1, EN 61008-1, IS 12640-1
- › Wide Range of Current Ratings - 16A to 100A
- › Precise Sensitivities for variety of applications - from 10mA to 500mA
- › 2P & 4P versions
- › Suitable for Isolation
- › Protection Degree - IP 20
- › Availability of wide Range of Site Mountable Accessories
- › Available in
 - » Type AC : For standard AC installations
 - » Type Adi : Suitable for AC + Pulsating DC (Type A) + Harmonics

Type-AC



Rating	Sensitivity	Modules 1 Mod = 17.5 mm	CAT Nos.	M.R.P. (₹) Per Unit
2P AC				
16A	10mA	2	AURAC201601	8315
25A	10mA	2	AURAC202501	9040
	30mA	2	AURAC202503	4670
	100mA	2	AURAC202510	4950
	300mA	2	AURAC202530	4950
	500mA	2	AURAC202550	6035
40A	30mA	2	AURAC204003	5340
	100mA	2	AURAC204010	5760
	300mA	2	AURAC204030	5760
	500mA	2	AURAC204050	6900
63A	30mA	2	AURAC206303	6485
	100mA	2	AURAC206310	6780
	300mA	2	AURAC206330	6780
	500mA	2	AURAC206350	7285
80A	30mA	2	AURAC208003	10585
	100mA	2	AURAC208010	10655
	300mA	2	AURAC208030	10655
100A	30mA	2	AURAC210003	11555
	100mA	2	AURAC210010	11640
	300mA	2	AURAC210030	11640



Rating	Sensitivity	Modules 1 Mod = 17.5 mm	CAT Nos.	M.R.P. (₹) Per Unit
4P AC				
25A	30mA	4	AURAC402503	6220
	100mA	4	AURAC402510	6600
	300mA	4	AURAC402530	6600
	500mA	4	AURAC402550	7935
40A	30mA	4	AURAC404003	6285
	100mA	4	AURAC404010	6700
	300mA	4	AURAC404030	6700
63A	30mA	4	AURAC406303	8045
	100mA	4	AURAC406310	7215
	300mA	4	AURAC406330	7670
80A	30mA	4	AURAC408003	8215
	100mA	4	AURAC408010	11950
	300mA	4	AURAC408030	12050
100A	30mA	4	AURAC408050	12800
	30mA	4	AURAC410003	12730
	100mA	4	AURAC410010	12815
	300mA	4	AURAC410030	12815
	500mA	4	AURAC410050	13195

Type-Adi



Rating	Sensitivity	Modules 1 Mod = 17.5 mm	CAT Nos.	M.R.P. (₹) Per Unit
2P Adi				
25A	30mA	2	AURAD202503	7355
	100mA	2	AURAD202510	7695
	300mA	2	AURAD202530	7695
40A	30mA	2	AURAD204003	7805
	100mA	2	AURAD204010	7930
	300mA	2	AURAD204030	7930
63A	30mA	2	AURAD206303	9130
	100mA	2	AURAD206310	9305
	300mA	2	AURAD206330	9305
100A	30mA	2	AURAD210003	13490



Rating	Sensitivity	Modules 1 Mod = 17.5 mm	CAT Nos.	M.R.P. (₹) Per Unit
4P Adi				
25A	30mA	4	AURAD402503	8895
	100mA	4	AURAD402510	9060
	300mA	4	AURAD402530	9060
40A	30mA	4	AURAD404003	9235
	100mA	4	AURAD404010	9380
	300mA	4	AURAD404030	9380
63A	30mA	4	AURAD406303	10055
	100mA	4	AURAD406310	10265
	300mA	4	AURAD406330	10265
100A	30mA	4	AURAD410003	16020
	300mA	4	AURAD410030	16020

*For technical details, please contact nearest branch office

RCBOs (Residual Current Breaker with Overcurrent Protection) [8536]

Range Highlights*

- › Conforms to IEC 61009-1, IS 12640-2, EN 61009-1
- › Short circuit Breaking Capacity - 10kA
- › Precise Sensitivities for a variety of applications
 - › from 10mA to 300mA
- › Suitable for Isolation

Type-AC

Rating	Sensitivity	Modules 1 Mod = 17.5 mm	CAT Nos.	M.R.P. (₹) Per Unit
2P AC*				
6A	10mA	2	AUF3C200601	6710
	30mA	2	AUF3C200603	6710
	100mA	2	AUF3C200610	6850
	300mA	2	AUF3C200630	6930
10A	10mA	2	AUF3C201001	6710
	30mA	2	AUF3C201003	6710
	100mA	2	AUF3C201010	6850
	300mA	2	AUF3C201030	6930
16A	10mA	2	AUF3C201601	6710
	30mA	2	AUF3C201603	6710
	100mA	2	AUF3C201610	6850
	300mA	2	AUF3C201630	6930
20A	30mA	2	AUF3C202003	6710
	100mA	2	AUF3C202010	6850
	300mA	2	AUF3C202030	6930
25A	30mA	2	AUF3C202503	6710
	100mA	2	AUF3C202510	6850
	300mA	2	AUF3C202530	6930
32A	30mA	2	AUF3C203203	6710
	100mA	2	AUF3C203210	6850
	300mA	2	AUF3C203230	6930
40A	30mA	2	AUF3C204003	6710
	100mA	2	AUF3C204010	6850
	300mA	2	AUF3C204030	6930
63A	30mA	4	AUF3C206303	7970
	100mA	4	AUF3C206310	8455
	300mA	4	AUF3C206330	8520
4P AC				
16A	30mA	7.5	AUF3C401603	7205
	100mA	7.5	AUF3C401610	8020
	300mA	7.5	AUF3C401630	8180
20A	30mA	7.5	AUF3C402003	7205
	100mA	7.5	AUF3C402010	8020
	300mA	7.5	AUF3C402030	8180
25A	30mA	7.5	AUF3C402503	7205
	100mA	7.5	AUF3C402510	8020
	300mA	7.5	AUF3C402530	8180
32A	30mA	7.5	AUF3C403203	7440
	100mA	7.5	AUF3C403210	8025
	300mA	7.5	AUF3C403230	8205
40A	30mA	7.5	AUF3C404003	7555
	100mA	7.5	AUF3C404010	8025
	300mA	7.5	AUF3C404030	8230
63A	30mA	7.5	AUF3C406303	9055
	100mA	7.5	AUF3C406310	9225
	300mA	7.5	AUF3C406330	9225
80A	30mA	12	AUF3C408003	35090
	100mA	12	AUF3C408010	35875
	300mA	12	AUF3C408030	35875
100A	30mA	12	AUF3C410003	37515
	100mA	12	AUF3C410010	38410
	300mA	12	AUF3C410030	38410



- › Availability of wide Range of Site Mountable Accessories
- › Available in
 - › Type AC: For standard AC installations
 - › Type Adi: Suitable for AC + Pulsating DC (Type A) + Harmonics

Type-Adi

Rating	Sensitivity	Modules 1 Mod = 17.5 mm	CAT Nos.	M.R.P. (₹) Per Unit
2P Adi				
6A	30mA	2	AUF3D200603	9055
	100mA	2	AUF3D200610	9975
	300mA	2	AUF3D200630	10350
10A	30mA	2	AUF3D201003	9055
	100mA	2	AUF3D201010	9975
	300mA	2	AUF3D201030	10350
16A	30mA	2	AUF3D201603	9055
	100mA	2	AUF3D201610	9975
	300mA	2	AUF3D201630	10350
20A	30mA	2	AUF3D202003	9055
	100mA	2	AUF3D202010	9975
	300mA	2	AUF3D202030	10350
25A	30mA	2	AUF3D202503	9055
	100mA	2	AUF3D202510	9975
	300mA	2	AUF3D202530	10350
32A	30mA	2	AUF3D203203	9055
	100mA	2	AUF3D203210	9975
	300mA	2	AUF3D203230	10350
40A	30mA	2	AUF3D204003	9055
	100mA	2	AUF3D204010	9975
	300mA	2	AUF3D204030	10350
63A	30mA	4	AUF3D206303	10475
	100mA	4	AUF3D206310	11080
	300mA	4	AUF3D206330	11180
4P Adi				
16A	30mA	7.5	AUF3D401603	9465
	100mA	7.5	AUF3D401610	10525
	300mA	7.5	AUF3D401630	10740
20A	30mA	7.5	AUF3D402003	9465
	100mA	7.5	AUF3D402010	10525
	300mA	7.5	AUF3D402030	10740
25A	30mA	7.5	AUF3D402503	9465
	100mA	7.5	AUF3D402510	10525
	300mA	7.5	AUF3D402530	10740
32A	30mA	7.5	AUF3D403203	9765
	100mA	7.5	AUF3D403210	10535
	300mA	7.5	AUF3D403230	10755
40A	30mA	7.5	AUF3D404003	9915
	100mA	7.5	AUF3D404010	10535
	300mA	7.5	AUF3D404030	10800
63A	30mA	7.5	AUF3D406303	11880
	100mA	7.5	AUF3D406310	12120
	300mA	7.5	AUF3D406330	12120
80A	30mA	12	AUF3D408003	35090
	100mA	12	AUF3D408010	35875
	300mA	12	AUF3D408030	35875
100A	30mA	12	AUF3D410003	37515
	100mA	12	AUF3D410010	38410
	300mA	12	AUF3D410030	38410

*For technical details, please contact nearest branch office

Indicating Lights [8531]



Description	Modules 1 Mod = 17.5 mm	Cat. No.	M.R.P. (₹) Per Unit
RED	1	AUIL01RED00	1465
YELLOW	1	AUIL01YEL00	1465
BLUE	1	AUIL01BLU00	1465
GREEN	1	AUIL01GRE00	1465
RED-YELLOW-BLUE	1	AUIL01RYB00	1780

SPDs (Surge Protection Devices) [8536]



Range Highlights

- › Conforms to IEC 61643-11
- › Available in Type 2 and Type 1+2
- › Type 2 : Protection against indirect lightning and switching surges
 - » Maximum Discharge Current - I_{max} up to 70kA
- › Type 1+2 : Protection against direct and indirect lightning surges
 - » Maximum Discharge Current - I_{max} up to 100kA

800V Solar Application

Description	Configuration	Modules 1 Mod = 17.5 mm	Voltage (Uc)	Cat. No.	M.R.P. (₹) Per Unit
Type 2, I _{max} 40kA	3P	4	1500	AUSP023P40-1500	17250
Type 1+2, I _{imp} 12.5kA	3P	5	1360	AUSP123P50-1360	51750
Type 1+2, I _{imp} 12.5kA	3P	4	880	AUSP123P50-880	35500



440V Application (Common + Differential Mode)

Description	I _{max}	Configuration	Modules 1 Mod = 17.5 mm	Cat. No.	M.R.P. (₹) Per Unit
Type 1+2, I _{imp} 12.5kA	50kA	1P+N	2	AUSP121PN50D	13750
		3P+N	4	AUSP123PN50D	26335
Type 2	40kA	1P+N	1	AUSP021PN40D	8595
		3P+N	2	AUSP023PN40D	17175
Type 2	15kA	1P+N	1	AUSP021PN15D	6875
		3P+N	2	AUSP023PN15D	13525
Type 1+2, I _{imp} 8kA	100kA	1P+N	2	AUSP121PN100D	12360
		3P+N	4	AUSP123PN100D	24290
Type 2	70kA	1P+N	2	AUSP021PN70D	13500
		3P+N	4	AUSP023PN70D	22485

SPD Cartridges

Description	Cat. No.	M.R.P. (₹) Per Unit
Cartridge for AUSP021PN15D	AUSC021PN15D	3380
Cartridge for AUSP021PN40D	AUSC021PN40D	4210
Cartridge for AUSP021PN70D / AUSP023PN70D	AUSC021PN70D	4500
Cartridge for AUSP023PN15D [#]	AUSC023PN15D	4420
Cartridge for AUSP023PN40D [#]	AUSC023PN40D	5620
Cartridge for AUSP121PN100D / AUSP123PN100D	AUSC121PN100D	6745
Cartridge for AUSP121PN50D / AUSP123PN50D	AUSC121PN50D	7280
Cartridge for AUSP023PN15D [#]	AUSC023PN15DG	4900
Cartridge for AUSP023PN40D [#]	AUSC023PN40DG	5115

[#]For technical details, please contact nearest branch office

Accessories [8538]

All Half Module and One Module Accessories are common for 80A-125A MCBs, RCBOs and Adi RCCBs



Description	Configuration	Modules 1 Mod = 17.5 mm	Voltage	CAT Nos.	M.R.P. (₹) Per Unit
Auxiliary Contact	1NO+1NC	0.5	240V AC, 24V DC	AUAXAC240	1255
AUX/TAC*	1NO+1NC	0.5	240V AC, 24V DC	AUATAC240	1470
HR AUX/TAC*	1NO+1NC	0.5	240V AC, 24V DC	AUATAC240HR	
Undervoltage	-	1	240V AC	AUUVAC240	2965
Release	-	1	24V DC	AUUVDC024	2965
Overvoltage Release	-	1	240V AC	AUOVAC240	3665
Shunt Release	-	1	240V AC	AUSRAC240	3400
	-	1	24V DC	AUSRDC024	3400
Padlock-Suitable for Lock Hasp 3.5 - 5 mm dia. max	Suitable for 1Pole=1Mod devices: RCCBs, RCBOs, Changeover Switches up to 40A			AUPD01	670
	Suitable for 1Pole-1.5Mod devices: MCBs 80A-125A, Changeover Switch 63A			AUPD02	755

Note: Standard Pack Quantity for Padlock - 2 Nos.

*For 80A-125A MCBs please contact nearest branch office

Energy Meters [9030]



Range Highlights

- › DIN mounting whole current operated meter
- › Accuracy Class 1.0
- › Inbuilt RS485 option
- › Parameters : Voltage, Current, kW, kWh, kVA, kVAh, RPM, Load hours, Interruptions

Description	Modules 1 Mod = 17.5 mm	Cat. No.	M.R.P. (₹) Per Unit
Single Phase - 60A	2	WD4010100000	3580
Three Phase - 80A	5	WD4020100000	7755
Single Phase - 60A (RS485)	2	WD4010110000	5295
Three Phase - 80A (RS485)	5	WD4020110000	11700

Isolators [8536]

Range Highlights

- › Suitable for Isolation as per IEC 60947-3, IS/IEC 60947-3
 - › Providing operational safety at the downstream
- › Comprehensive range suitable for various applications
 - › Utilization Category of AC-22A
 - › Suitability for Mounting Auxiliary Contact



Rating	Modules 1 Mod = 17.5 mm	CAT Nos.	M.R.P. (₹) Per Unit
Double Pole			
25A	2	AUI00202500	715
32A	2	AUI00203200	790
40A	2	AUI00204000	855
63A	2	AUI00206300	1125
80A	2	AUI00208000	1375
100A	2	AUI00210000	1535
125A	2	AUI00212500	1745
Three Pole			
32A	3	AUI00303200	1380
40A	3	AUI00304000	1485
63A	3	AUI00306300	1745
80A	3	AUI00308000	1920
100A	3	AUI00310000	2035
125A	3	AUI00312500	2260
Four Pole			
32A	4	AUI00403200	1535
40A	4	AUI00404000	1930
63A	4	AUI00406300	2085
80A	4	AUI00408000	2295
100A	4	AUI00410000	2545
125A	4	AUI00412500	2795

Changeover Switches [8536]

Range Highlights

- › Conforms to IEC 60947-3 and IS/IEC 60947-3
- › Available in 3 positions (I-O-II) with centre off position
- › Utilization category AC-22A



Rating	Modules 1 Mod = 17.5 mm	Cat. No.	M.R.P. (₹) Per Unit
Double Pole			
25A	2	AUC00202500	2270
40A	2	AUC00204000	3475
63A	3	AUC00206300	4040
Four Pole			
40A	4	AUC00404000	5985
63A	6	AUC00406300	6785

Modular Contactors [8536]



Range Highlights

- › Wide Range of Current Ratings:
 - » 25A, 40A and 63A
- › Conforms to:
 - » IEC 61095, EN 61095
 - » IEC 60947-4-1, EN 60947-4-1
 - » IEC 60947-5-1
- › Protection Degree IP 20

Description (AC-1)	Modules 1 Mod = 17.5 mm	Cat. No.	M.R.P. (₹) Per Unit
25A-1NO	1	AUMC1002501	2545
25A-2NO	1	AUMC2002501	3195
40A-2NO	3	AUMC2004003	5465
40A-3NO	3	AUMC3004003	7830
40A-4NO	3	AUMC4004003	9185
63A-2NO+2NC	3	AUMC2206303	9710
63A-3NO	3	AUMC3006303	9950
63A-4NO	3	AUMC4006303	10955
Accessory [8538]			
Auxiliary Contact, 2NO	0.5	AUMCAUX240	2380

Single Phase - ACCL [8536]

Automatic Changeover with Current Limiter



Range Highlights

- › Conforms to IEC 60947-6, IEC 60947-3
- › Wide Range of Current Ratings
 - » (Generator side) - 1A to 30A
 - » (Electricity Board side) - 30A
- › RoHS compliant

Description EB/DG	Modules 1 Mod = 17.5 mm	CAT Nos.	M.R.P. (₹) Per Unit
30A/1A	4	AUCL01030001	3045
30A/1.5A	4	AUCL010301E5	3045
30A/2A	4	AUCL01030002	3045
30A/2.5A	4	AUCL010302E5	3045
30A/3A	4	AUCL01030003	3045
30A/4A	4	AUCL01030004	3045
30A/5A	4	AUCL01030005	3045
30A/6A	4	AUCL01030006	3045
30A/8A	4	AUCL01030008	3045
30A/10A	4	AUCL01030010	3045
30A/12A	4	AUCL01030012	3045
30A/15A	4	AUCL01030015	3045
30A/20A	4	AUCL01030020	3045
30A/30A	4	AUCL01030030*	3045

*Non-current limiting variant

Three Phase - ACCL [8536]

Automatic Changeover with Current Limiter



Range Highlights

- › Settable overload current limit at DG side
- › Separate power consumption monitoring for Mains & Genset
- › Settable overvoltage & undervoltage protection
- › Settable TPN or SPN mode at DG side
- › Protection against single phasing

Description (AC-1) EB/DG	Cat. No.	M.R.P. (₹) Per Unit
32A / 32A	AUCL03032032	18415
40A / 32A	AUCL03040032	18975
40A / 40A	AUCL03040040	20540
50A / 50A	AUCL03050050	29275
63A / 50A	AUCL03063050	32300
63A / 63A	AUCL03063063	36590
80A / 80A	AUCL03080080	55765
125A / 125A	AUCL03125125	93870

For 3 Phase ACCL programming video please scan the QR code or click here



AU-COM: Communication Solution [8538]

Range Highlights

- › Can be deployed for AU range of MCBs, RCCBs, RCBOs & energy meters
- › Capable of local and remote status monitoring of final distribution products- ON, OFF and TRIP
- › With AU-COM and modular contactors AU-MC, remote controlling of the load can be achieved
- › The convertor module converts RS 485 data signals from AU-COM into SCADA-compatible ethernet signals
- › For remote monitoring and metering of energy, single-phase and three-phase energy meters with RS 485 converters module can be Used



Description	Modules 1 Mod = 17.5 mm	CAT Nos.	M.R.P. (₹) Per Unit
AU-COM communication module	1.5	AUCOM0402	*

*Please contact nearest branch office for details.

General Terms

All prices are on Maximum retail price basis inclusive of all duties, GST & any other tax as applicable.

Warranty Policy

All products listed in the price list are covered by a warranty against manufacturing defects for a period of 18* months from the date of purchase. For Lauritz Knudsen MCBs & Isolators mounted inside Lauritz Knudsen Distribution Boards, an extended warranty of 5 years is provided.

In the event of a defect due to faulty workmanship or other associated reasons, we will, at our discretion, remedy the defect or replace the faulty parts or the entire product as soon as possible, free of cost.

However, the warranty is subject to proper usage, efficient maintenance, and does not cover defects arising from fire, accidents, inefficient maintenance, faulty operation, or deliberate or accidental damage. It also does not cover damage to power electronic components such as thyristors & IGBTs, which primarily fail due to overtemperature & over-voltage. Users need to take adequate precautions to eliminate these conditions. Manufacturer shall not be responsible & liable for any special, incidental, social or consequential (including lost profits) loss, consequential damages, injury or damages (punitive) of any kind solely attributable to defect or failure of its products. Manufacturer shall not be liable in any manner for the issue of or failure in the performance of other equipment the product is attached to.

Comprehensive Service Support

Lauritz Knudsen Electrical & Automation has over seven decades of experience in providing after sales service for low voltage distribution system in every type of industry & commercial complex in India

Lauritz Knudsen Electrical & Automation offers the following services, partnering you in your maintenance of low voltage distribution products:

- > Regular Maintenance
- > Preventive Maintenance Programme
- > On Call
- > Annual Maintenance Contract
- > Product Support for Managing Obsolescence-

Switchgear Training Centres



Pune

Lauritz Knudsen Electrical & Automation
Switchgear Training Centre
T-156 / 157, MIDC,
Bhosari, Pune - 411 026
Tel: 020-2712 0037 / 2712 0653
E-mail: STC-PUNE@LK-EA.com



Lucknow

Lauritz Knudsen Electrical & Automation
Switchgear Training Centre
C-6 & 7, UPSIDC,
P. O. Sarojininagar,
Lucknow - 226 008
Tel: 97944 54455
E-mail: STC-LUCKNOW@LK-EA.com



Delhi

Lauritz Knudsen Electrical & Automation
Switchgear Training Centre
A-25, Imperia Complex, First Floor
Mohan Cooperative Industrial Estate
Near Sarita Vihar / Mohan Estate Metro Station
Main Mathura Road, New Delhi - 110044
Tel: 9899020306 / 9720186726 / 9560845094
E-mail: STC-DELHI@LK-EA.com



Kolkata

Lauritz Knudsen Electrical & Automation
Switchgear Training Centre,
2nd Floor, Block BN3, Sector V,
Salt Lake City,
Kolkata - 700091, West Bengal
Tel: 7738717893 / 7797795567
E-mail: STC-KOLKATA@LK-EA.com



Vadodara

Lauritz Knudsen Electrical & Automation
Switchgear Training Centre
Behind L&T Knowledge City,
Near Village Ankhol,
Vadodara - 390019
Tel: 0265 6147805 / 6147808
E-mail: STC-VADODARA@LK-EA.com



Coonor

Lauritz Knudsen Electrical & Automation
Switchgear Training Centre
Ooty-Coonor Main Road
Yellanahalli P.O.,
The Nilgiris - 643 243
Tel: 0423 251 7107
E-mail: STC-COONOR@LK-EA.com

Customer Interaction Center (CIC)
Phone no: 022 6932 7800
Web: www.LK-EA.com | e-mail: CIC@LK-EA.com



Electrical Standard Products (ESP) Offices

HEAD OFFICE

Lauritz Knudsen Electrical & Automation, A/600, Shil-Mahape Road, TTC Industrial Area, MIDC Thane, Navi Mumbai, 400 710, Maharashtra.

Tel: 022-6722 6300 | Fax: 022-6705 1112 | e-mail: CIC@LK-EA.com

BRANCH OFFICES

Lauritz Knudsen Electrical & Automation
C-201, The First Commercial Complex,
B/S Keshavbaug Party Plot, Vastrapur,
Ahmedabad - 380 015
Phone No: 022-6932 7800
e-mail: CIC@LK-EA.com

Lauritz Knudsen Electrical & Automation
Shri Daneshwari, 1st Floor,
Plot No. 17, 2nd Cross, Near Old Income
Tax Office Road, Vidyanagar,
Hubballi - 580 021
Phone No: 022-6932 7800
e-mail: CIC@LK-EA.com

Lauritz Knudsen Electrical & Automation
No.10, Fortuna Towers, 2nd Floor,
Rana Pratap Marg, Near NBRI,
Lucknow - 226 001
Phone No: 022-6932 7800
e-mail: CIC@LK-EA.com

Lauritz Knudsen Electrical & Automation
A06/A07, Second Floor,
Grand Chandra Complex, Frazer Road
Patna - 800 001
Phone No: 022-6932 7800
e-mail: CIC@LK-EA.com

Lauritz Knudsen Electrical & Automation
Wework Central, #36 Infantry Road,
Bengaluru - 560 001
Phone No: 022-6932 7800
e-mail: CIC@LK-EA.com

Lauritz Knudsen Electrical & Automation
AWFIS Space Solutions, Prestige Phoenix,
4th floor, 1405, Umanagar, Begumpet,
Hyderabad - 500 016
Phone No: 022-6932 7800
e-mail: CIC@LK-EA.com

Lauritz Knudsen Electrical & Automation
El Dorado Building, 3rd Floor, 6,
Venkatraman Street, Chinna Chokkikulam,
Madurai - 625 002
Phone No: 022-6932 7800
e-mail: CIC@LK-EA.com

Lauritz Knudsen Electrical & Automation
UrbanWrk, 5th Floor, Sai Radhe,
Raja Bahadur Mill Road, Behind Hotel
Grand Sheraton, Sangamwadi
Pune - 411 001
Phone No: 022-6932 7800
e-mail: CIC@LK-EA.com

Lauritz Knudsen Electrical & Automation
Work loop Unit-612, 6th Floor,
Esplanade One, Rasulgarh,
Bhubaneswar - 751 010
Phone No: 022-6932 7800
e-mail: CIC@LK-EA.com

Lauritz Knudsen Electrical & Automation
Workie, 214 - 2nd Floor,
Apollo Premier, PU-4,
Scheme No. 54, Vijay Nagar Square,
Indore - 452 010
Phone No: 022-6932 7800
e-mail: CIC@LK-EA.com

Lauritz Knudsen Electrical & Automation
Bestech Business Park,
Tower - A, 2nd floor, Sector - 66
Mohali - 160059
Phone No: 022-6932 7800
e-mail: CIC@LK-EA.com

Lauritz Knudsen Electrical & Automation
Office No. 211 & 212, Pithalia Plaza,
KK Road, Near Fafadih Chowk,
Raipur - 492 001
Phone No: 022-6932 7800
e-mail: CIC@LK-EA.com

Lauritz Knudsen Electrical & Automation
801 Word Level-8, No. 28,
SIDCO Industrial Estate, Guindy,
Chennai - 600 032
Phone No: 022-6932 7800
e-mail: CIC@LK-EA.com

Lauritz Knudsen Electrical & Automation
Office No. 430, 4th Floor,
Jaipur Electronic Market, Riddhi Siddhi,
Gopalpura Bypass,
Jaipur - 302 018
Phone No: 022-6932 7800
e-mail: CIC@LK-EA.com

Lauritz Knudsen Electrical & Automation
TC II, Tower B, PRIMA BAY Gate No. 5,
Saki Vihar Road Powai,
Mumbai - 400 072
Phone No: 022-6932 7800
e-mail: CIC@LK-EA.com

Lauritz Knudsen Electrical & Automation
DevX 4th Floor, A Wing, Om 9 Square,
150 Ft Ring Road, Near Nana Mava Circle,
Opp Silver Heights,
Rajkot - 360 001
Phone No: 022-6932 7800
e-mail: CIC@LK-EA.com

Lauritz Knudsen Electrical & Automation
Playworkz Coworking Space
43 & 44, 3rd Cross,
Bharathy Colony, Peelamedu,
Coimbatore - 641 004
Phone No: 022-6932 7800
e-mail: CIC@LK-EA.com

Lauritz Knudsen Electrical & Automation
GDR Siddha, Ground Floor, N Road
Bistupur, Opposite St. Mary's Church,
Jamshedpur - 831 001
Phone No: 022-6932 7800
e-mail: CIC@LK-EA.com

Lauritz Knudsen Electrical & Automation
Unnati Building, 2nd Floor,
Automation Campus, A-600, TTC Industrial
Area Shil-Mahape Road, Mahape,
Navi Mumbai - 400 710
Phone No: 022-6932 7800
e-mail: CIC@LK-EA.com

Lauritz Knudsen Electrical & Automation
10th Floor, Titaanium Business,
Bhimrad Road, Althan
Surat - 395 017
Phone No: 022-6932 7800
e-mail: CIC@LK-EA.com

Lauritz Knudsen Electrical & Automation
3rd Floor, 1&2 Vijay Park,
Main Chakrata Road, Opp. Anandam,
Near Ballupur chowk,
Dehradun - 248 001
Phone No: 022-6932 7800
e-mail: CIC@LK-EA.com

Lauritz Knudsen Electrical & Automation
Business Communication Centre
2nd Floor, Chiramel Chambers,
Kurusipally Road, Ravipuram,
Kochi - 682 015
Phone No: 022-6932 7800
e-mail: CIC@LK-EA.com

Lauritz Knudsen Electrical & Automation
M1 & M2, Mezzanine Floor,
Himalaya Excellency,
Plot No. C-47, Pratap Nagar Square,
Nagpur - 440 022
Phone No: 022-6932 7800
e-mail: CIC@LK-EA.com

Lauritz Knudsen Electrical & Automation
11th Floor, Block-D, Notus IT Park,
Sarabhai Campus, Bhailal Amin Marg,
Vadodara - 390 023
Phone No: 022-6932 7800
e-mail: CIC@LK-EA.com

Lauritz Knudsen Electrical & Automation
Ground Floor, B-27,
Biplab Rashbihari Sarani,
Sector 2A, Bidhan Nagar,
Durgapur - 713 212
Phone No: 022-6932 7800
e-mail: CIC@LK-EA.com

Lauritz Knudsen Electrical & Automation
207, 2nd floor, Revolution Complex,
Station Road, E Ward,
Next to Pedestrian Bridge,
Kolhapur - 416 001
Phone No: 022-6932 7800
e-mail: CIC@LK-EA.com

Lauritz Knudsen Electrical & Automation
2nd Floor, Samarth House,
Opposite Titan World,
Samarth Nagar, Mahatma Nagar,
Nasik - 422 005
Phone No: 022-6932 7800
e-mail: CIC@LK-EA.com

Lauritz Knudsen Electrical & Automation
Qubexpro Business Centre,
4th Floor, V Mall, Above Lifestyles,
Factor Layout, Waltair Uplands,
Visakhapatnam - 530 003
Phone No: 022-6932 7800
e-mail: CIC@LK-EA.com

Lauritz Knudsen Electrical & Automation
6th Floor, Exotica Greens, A Block, 191,
R G Baruah Road, Guwahati Central,
Guwahati - 781 005
Phone No: 022-6932 7800
e-mail: CIC@LK-EA.com

Lauritz Knudsen Electrical & Automation
2nd Floor, BN3, Salt Lake, Sector-V,
Kolkata - 700 091
Phone No: 022-6932 7800
e-mail: CIC@LK-EA.com

Lauritz Knudsen Electrical & Automation
A-25, 1st Floor, Imperia Complex,
Mohan Corporative Industrial Estate,
Near Sarita Vihar Metro Station,
Mathura Road,
New Delhi - 110 044
Phone no: 022-6932 7800
e-mail: CIC@LK-EA.com

Product improvement is a continuous process. For the latest information and special application, please contact any of our offices listed here. Product photographs shown for representative purpose only.



Lauritz Knudsen Electrical & Automation, Electrical Standard Product

A/600, Shil-Mahape Road, TTC Industrial Area, MIDC Thane, Navi Mumbai, 400 710, Maharashtra, Phone No: 022-6722 6300 | Web: www.LK-EA.com

Customer Interaction Center (CIC)

Phone no: 022-6932 7800

Web: www.LK-EA.com | e-mail: CIC@LK-EA.com