

ASSEMBLY INSTRUCTIONS:

ASSEMBLE THE CONTACTORS AND MIL KIT ON BASE PLATE / IN PANEL IN FOLLOWING MANNER

1. DRILL THE HOLES AS PER THE DRILLING PLAN PROVIDED.
2. MOUNT FIRST CONTACTOR (CONTACTOR 'A').
3. MOUNT MCX-M2 MIL KIT BESIDES CONTACTOR 'A'.
4. MOUNT SECOND CONTACTOR (CONTACTOR 'B') BESIDES MIL KIT.
5. ENSURE THERE IS NO GAP BETWEEN CONTACTORS AND MIL KIT.
6. ENSURE ORIENTATION OF CONTACTORS, ADD ON BLOCKS AS PER FIG. ON PAGE #4.
7. ENSURE PROPER FUNCTIONING OF COMPLETE MIL ASSEMBLY BY PRESSING THE BRIDGE OF CONTACTOR 'A' AND 'B' ALTERNATELY.



CAUTION :

1. IT IS DESIRABLE TO HAVE THE CONTACTORS ELECTRICALLY INTERLOCKED. THIS WILL PREVENT THE BURNING OF THE COILS IN CASE OF PROLONGED SUPPLY TO THE CONTACTOR WHICH IS SUPPOSED TO BE IN OFF CONDITION.
2. USE OF SIDE MOUNTING ADD-ONS IS NOT PERMITTED.
3. ENSURE THERE IS NO GAP BETWEEN CONTACTORS AND MIL KIT

NOTE :

1. MIL KIT CAN BE USED WITH FOLLOWING CONTACTORS,- MCX11-CS97013
MCX12-CS97014
MCX13-CS97015
2. CONNECT TOP ADD-ONS AS PER REQUIREMENT.

ADD-ON BLOCKS: CS94112, CS94113
CS94114, CS94115
CS94116, CS94117
CS94118, CS94119
CS94120, CS94121



"This literature gives information to user about product installation, operation maintenance and disposal. This information is not exhaustive and should customer require further information, in specific cases, customer may contact customer interaction cell."

"The manufacturer assumes no responsibility for injuries, losses, damages to human beings and/or equipments due to inappropriate application of instructions, provided herein."

"Product development is a continuous process. The information given in this literature is Subject to change. For latest information the customer may contact customer interaction cell."

"Product images are indicative"



CUSTOMER INTERACTION CELL (CIC)

Phone No: 022 6932 7800
E-mail: CIC@LK-EA.COM
Website: WWW.LK-EA.COM



Electrical Standard Products
A/600, SHIL - MAHAPE ROAD,
TTC Industrial Area, MIDC Thane,
MUMBAI, MAHARASHTRA, 400710

VER. 1.0

ST50560

MECHANICAL INTERLOCK KIT MCX-M2

FOR MCX 11-13 CONTACTORS



INSTRUCTION MANUAL

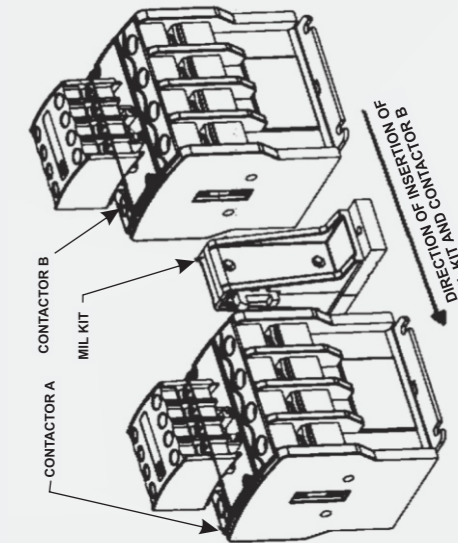
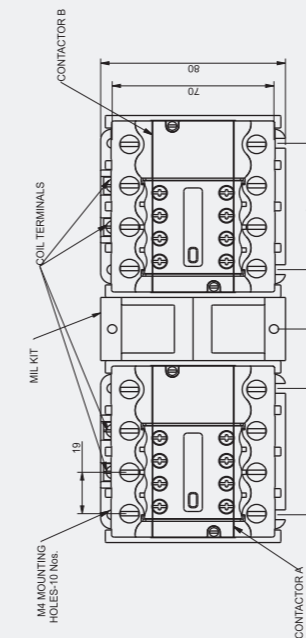
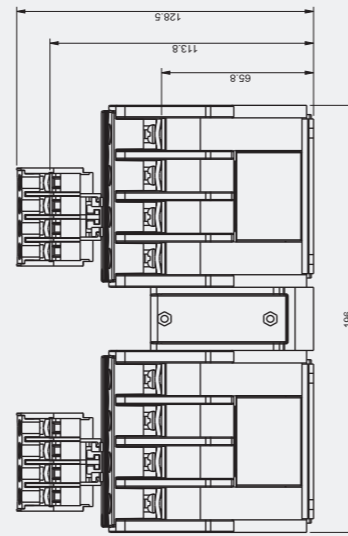


Front Side

Hazards of electric shock and burning. Installation, Commissioning and Maintenance to be done by qualified personnel only. Always use an appropriate voltage detection device to confirm the absence of voltage. Disconnect the power and isolate before proceeding any work on this equipment. Use according to the operating instructions, professional practices, wiring rules, codes, safety regulations applicable to the given installation.



Carton can be recycled after removal of staples from carton.



FOR DRILLING PLAN REFER BACK SIDE

MATERIAL: 80 gsm MAPLITHO PAPER

NOTE : UNLESS OTHERWISE SPECIFIED LAYOUT, COLOUR SCHEME, FONT STYLES AND FOLDING SEQUENCE CONFORM TO CD01020

This component does not use any material listed hazardous by RoHS directives

TCN 500001470535
16-05-2024 SS

REVISIONS

DATE:	
SCALE:	
OFN/RLM No.:	
SOFTWARE:	Coreldraw
MODEL:	
PROCESS SHEET:	DEPT:
DRAWN BY:	
CHECKED BY:	
APPROVED BY:	

L&T Electrical & Automation

(A Unit of Schneider Electric India Private Limited)

PRODUCT INSERT
MCX M2 MIL KIT

ST50560

SHEET 1 OF 2

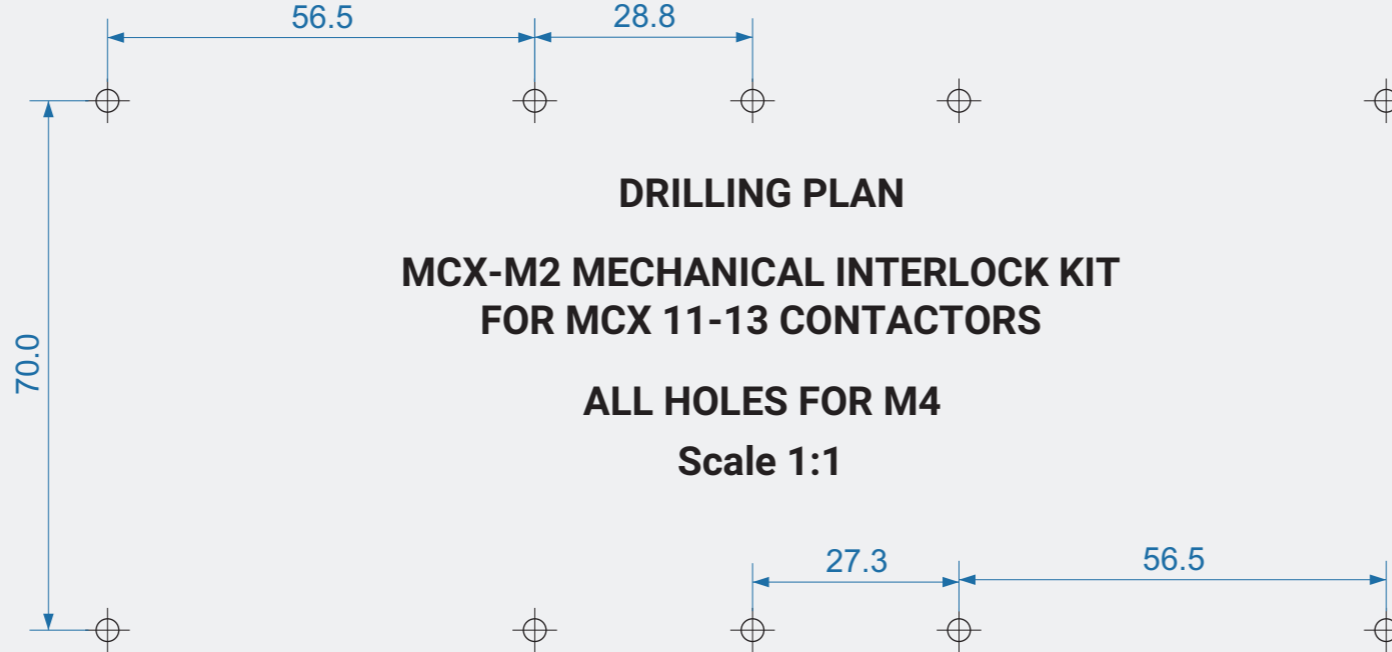
099091S

297.0

210.0

Back Side

DRILLING PLAN



DRILLING PLAN

MCX-M2 MECHANICAL INTERLOCK KIT
FOR MCX 11-13 CONTACTORS

ALL HOLES FOR M4
Scale 1:1

THIS DRAWING AND DESIGN MUST NOT BE COPIED WITHOUT PERMISSION IN WRITING.

MATERIAL: 80 gsm MAPLITHO PAPER
NOTE : UNLESS OTHERWISE SPECIFIED LAYOUT, COLOUR SCHEME,
FONT STYLES AND FOLDING SEQUENCE CONFORM TO CD01020

This component does not use any material listed hazardous by RoHS directives

REVISIONS

DATE:
SCALE:
OFN/RLM No.:
SOFTWARE: Coreldraw
MODEL:
PROCESS SHEET:
DRAWN BY:
CHECKED BY:
APPROVED BY:

L&T Electrical & Automation

(A Unit of Schneider Electric India Private Limited)

PRODUCT INSERT
MCX M2 MIL KIT

ST50560

SHEET 2 OF 2

